

# **Digital Information Ltd.**

## **Workflow connection**

### **CREP Prinergy 2.x to Preproofer 760-960 Double sided proof systems**

**Configure workflow  
June 2005**

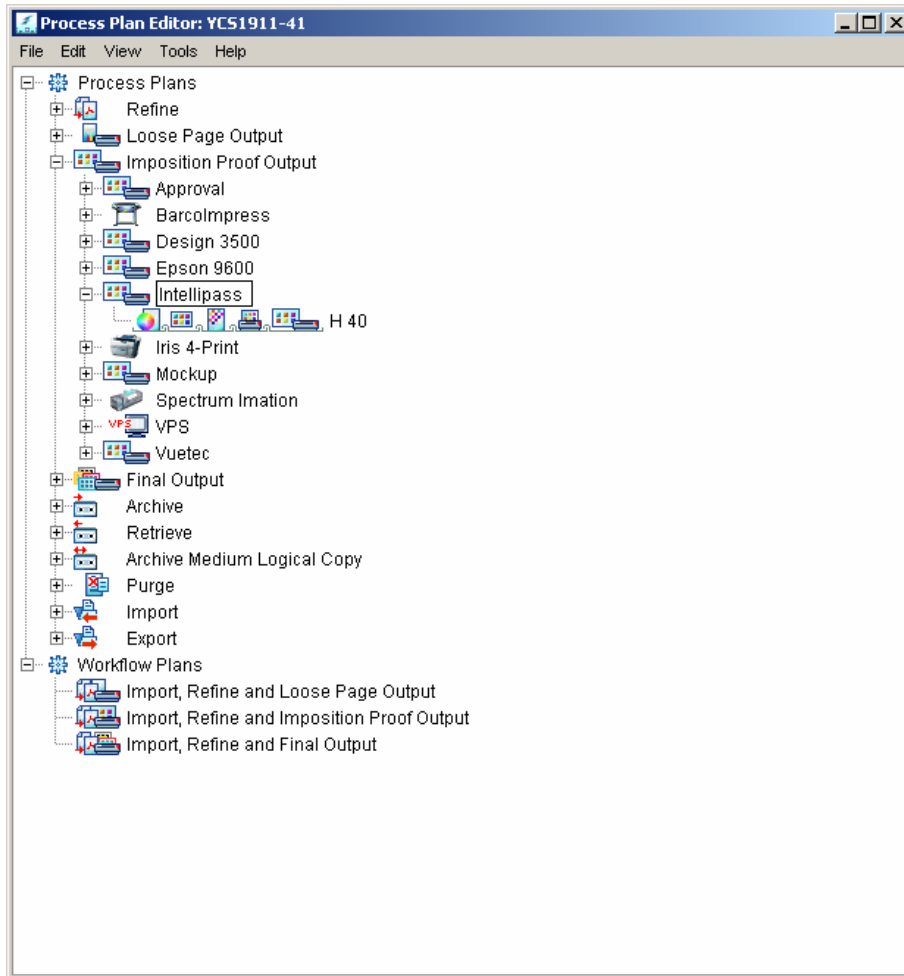
## Prinerger Process Plan for usage with DI-Plot / Preproofer

Prinerger version 2.1

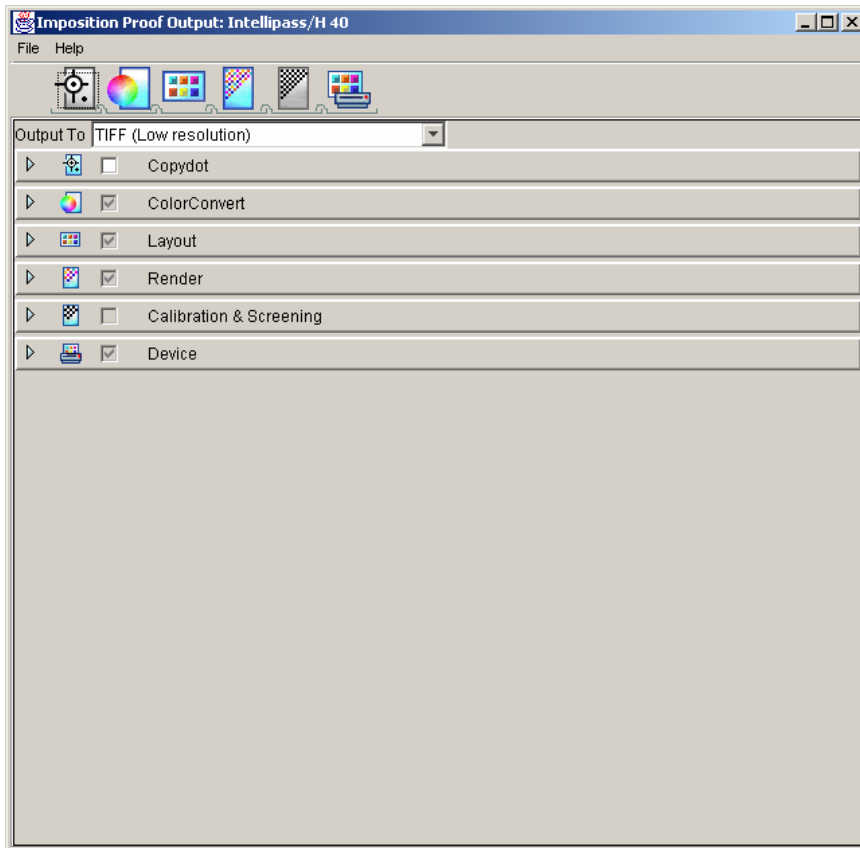
Created : 22<sup>nd</sup> June 2005

### 1. Setup process plan

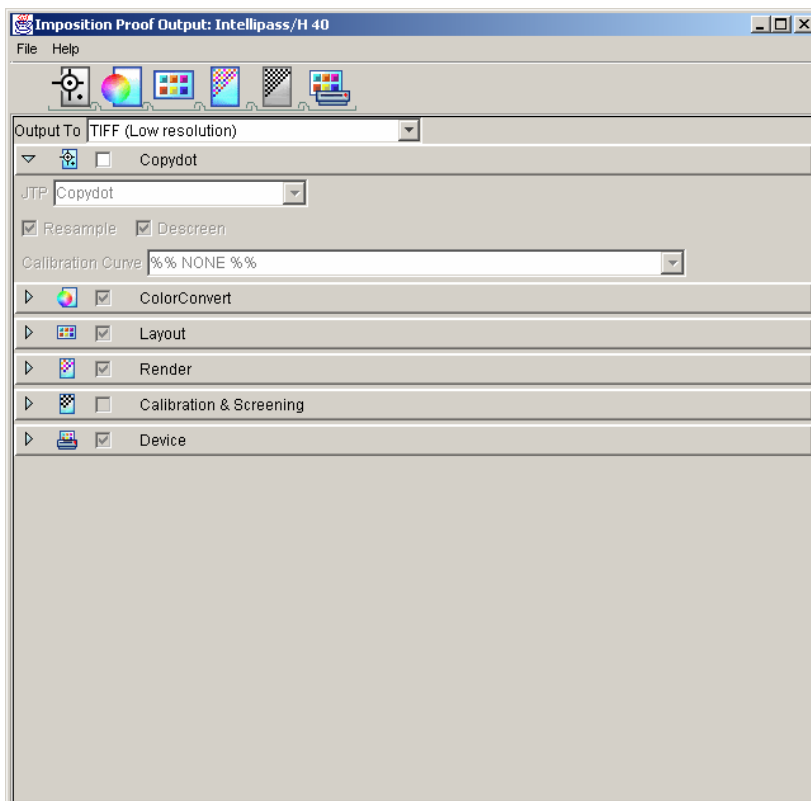
1. Open the process plan editor at a workstation

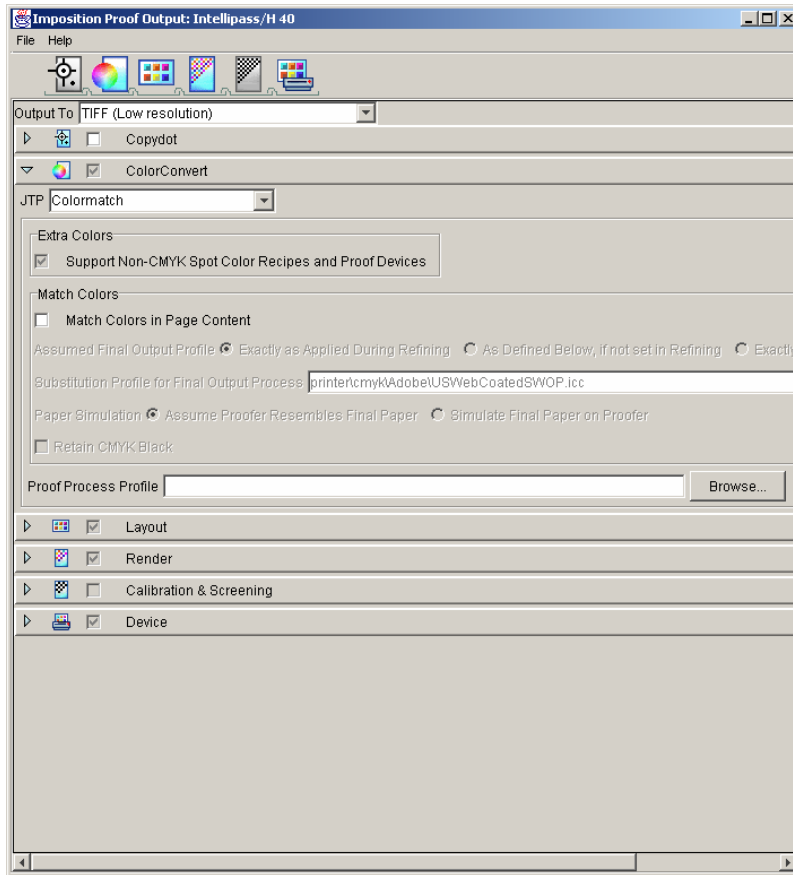


2. Duplicate an existing process plan which is used for outputting a TIFF (low resolution)

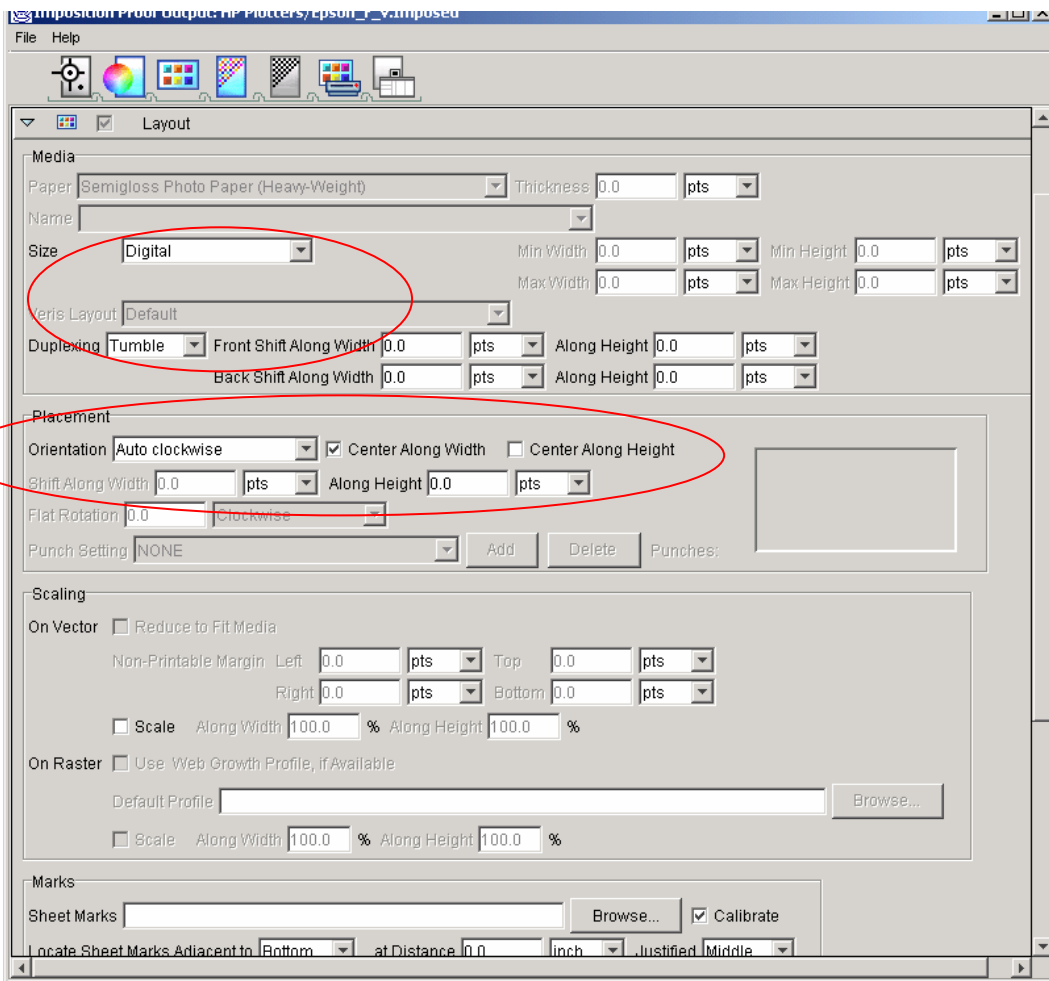


3. Set the parameters for the process plan like

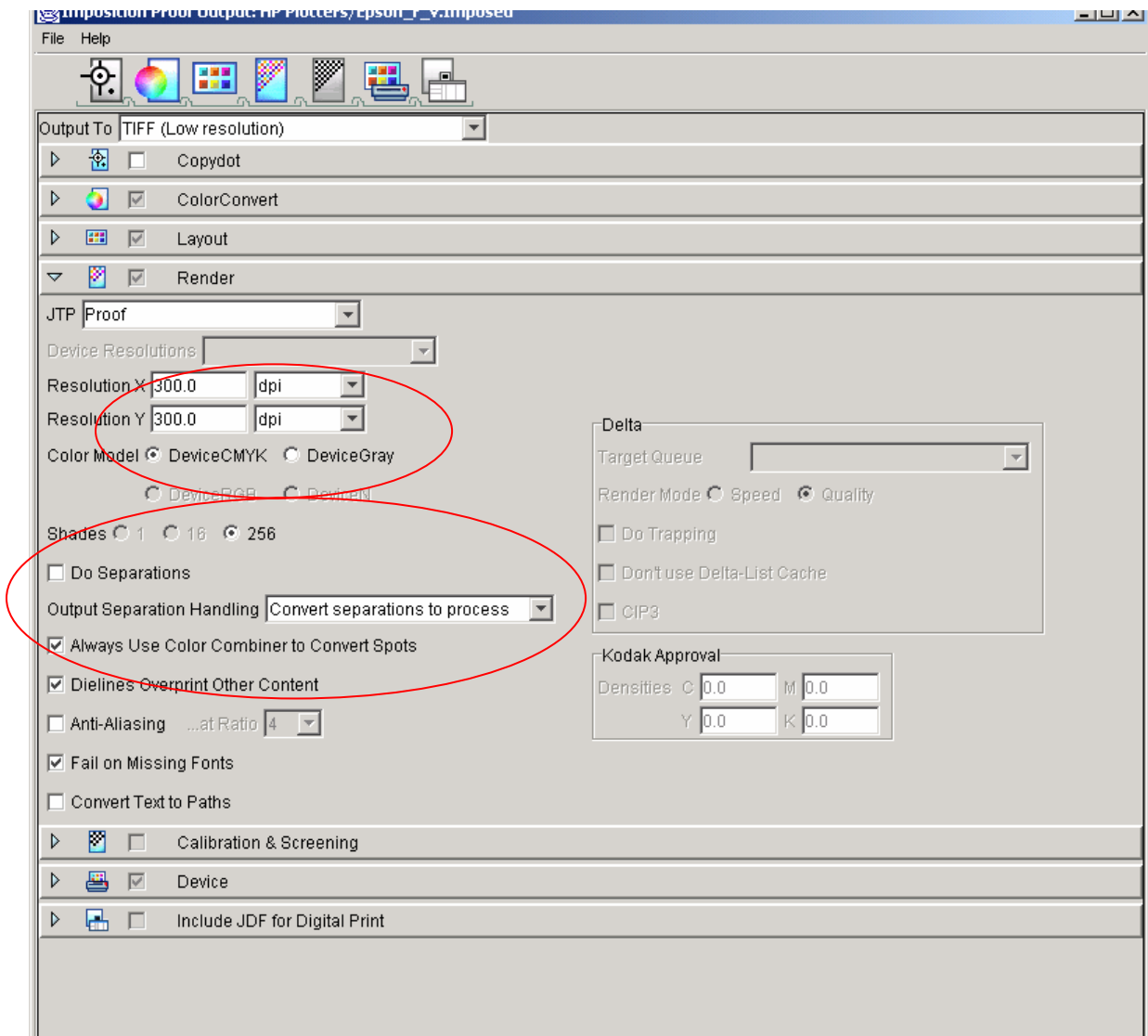


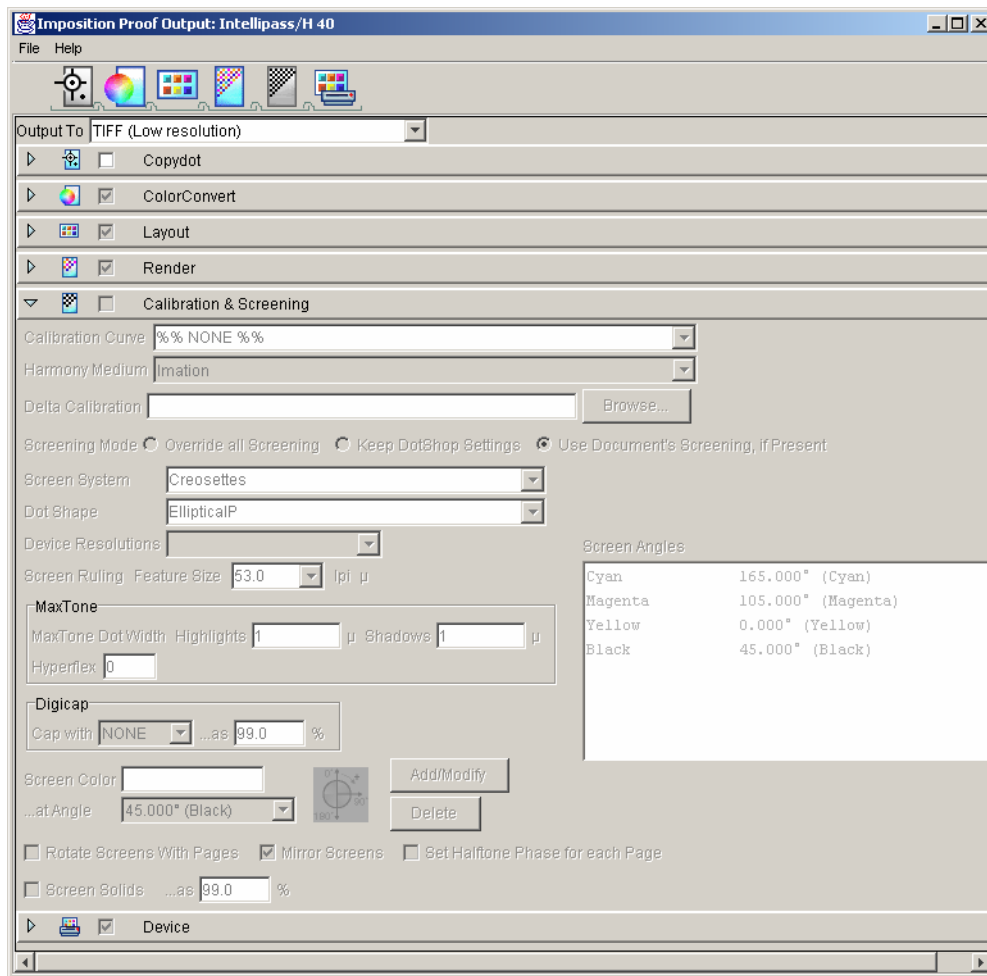


Important: select “Digital” and set “Center Along Width”

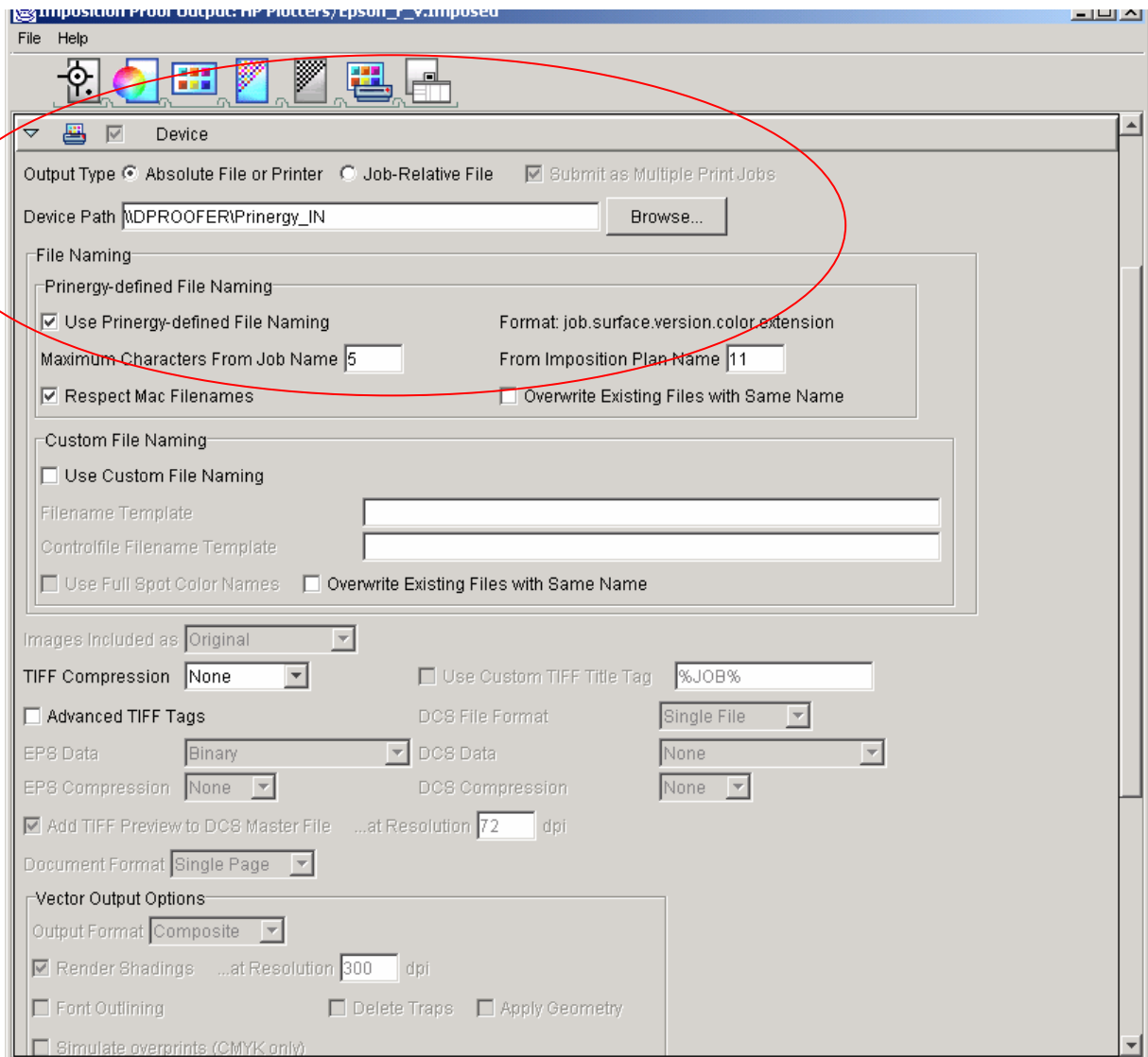


Set resolution like 300dpi. Select “DeviceCMYK” as the color model, “256” shades.





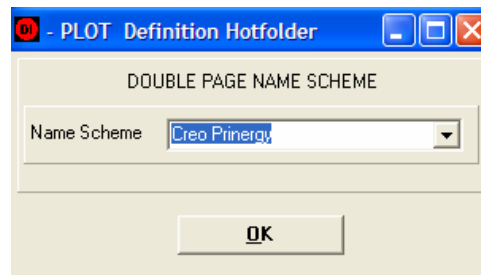
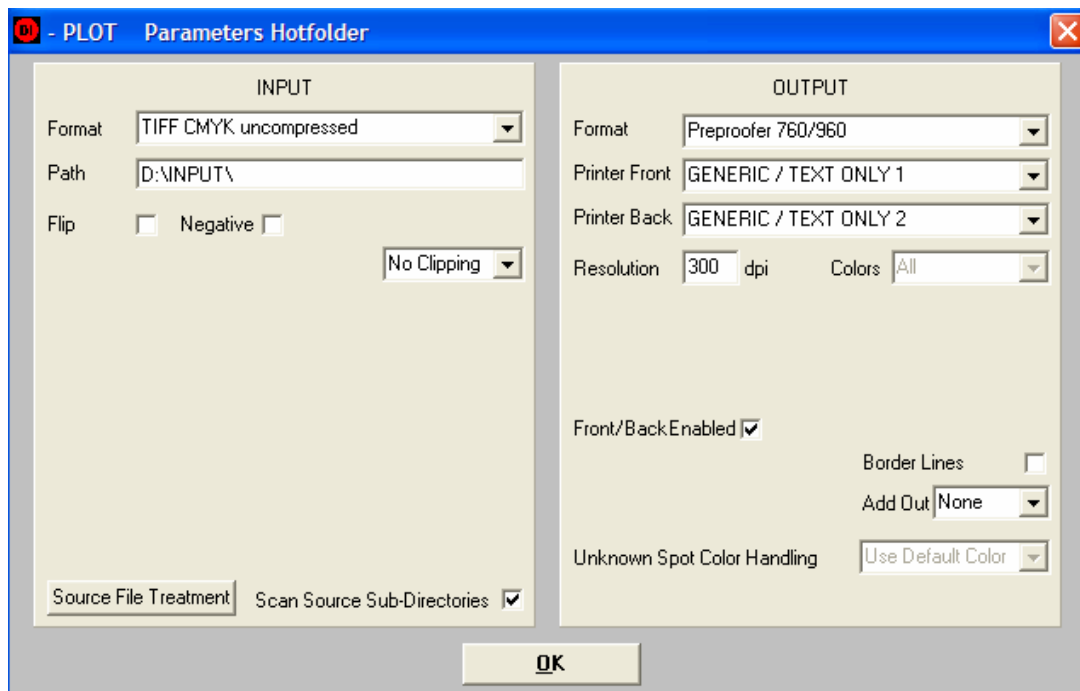
Select the output folder and choose “LZW” as a tiff compression.





## 2. Settings DI-Plot

To run DI-Plot in Hotfolder mode, configure it like:



Job names will look like:

Front side

Jobname . 1A . CMYK . TIF

Jobname . 1C . CMYK . TIF

Jobname . 2A . CMYK . TIF

Back side

Jobname . 1B . CMYK . TIF

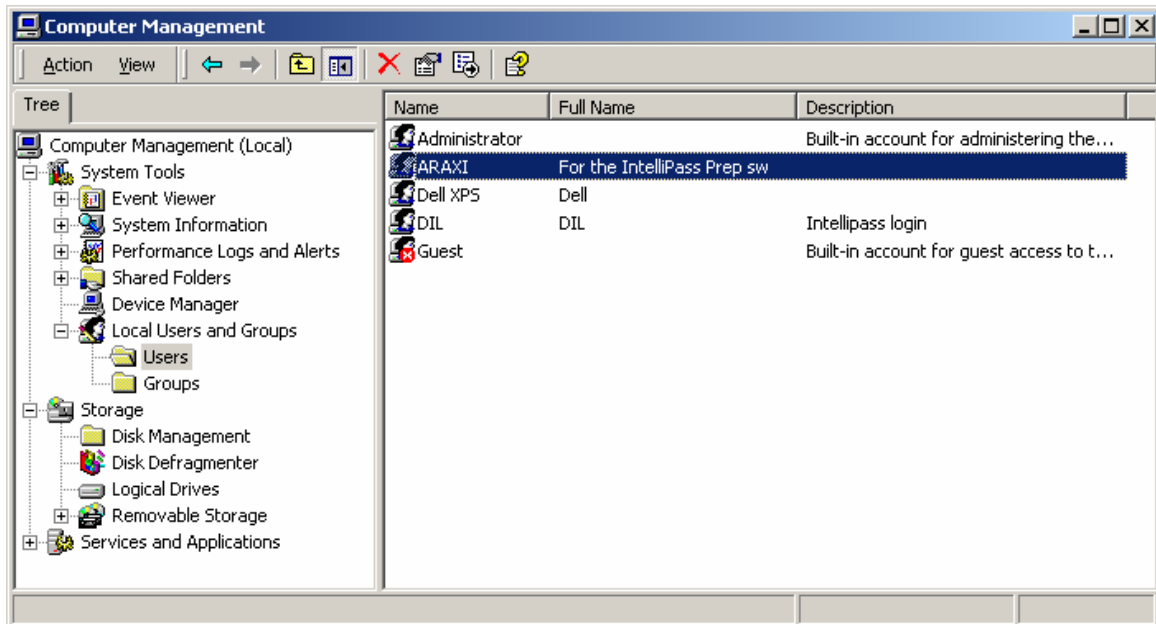
Jobname . 1D . CMYK . TIF

Jobname . 2B . CMYK . TIF

### 3. Connecting the Prinerigy Server to the DI-Plot PC

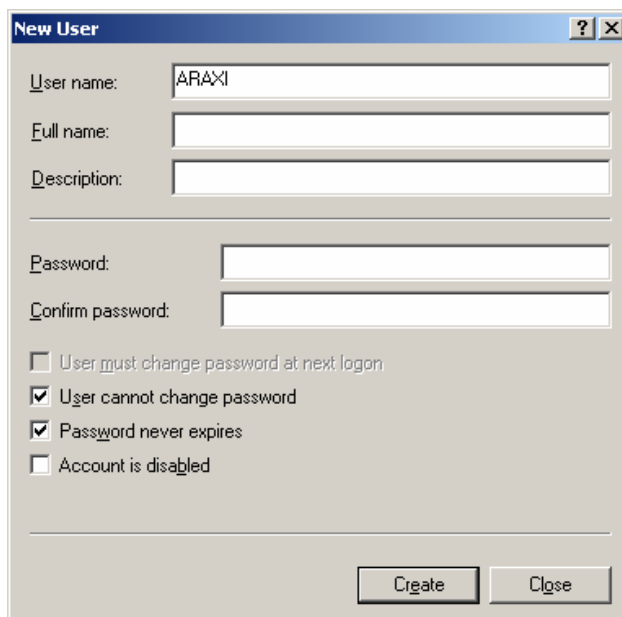
When the Prinerigy server system outputs directly to the DI-Plot PC, it is necessary to create a prinerigy user on the DI-Plot PC and add the shared directory in the Prinerigy Administrator window.

1. Create a User on the DI-Plot PC like:

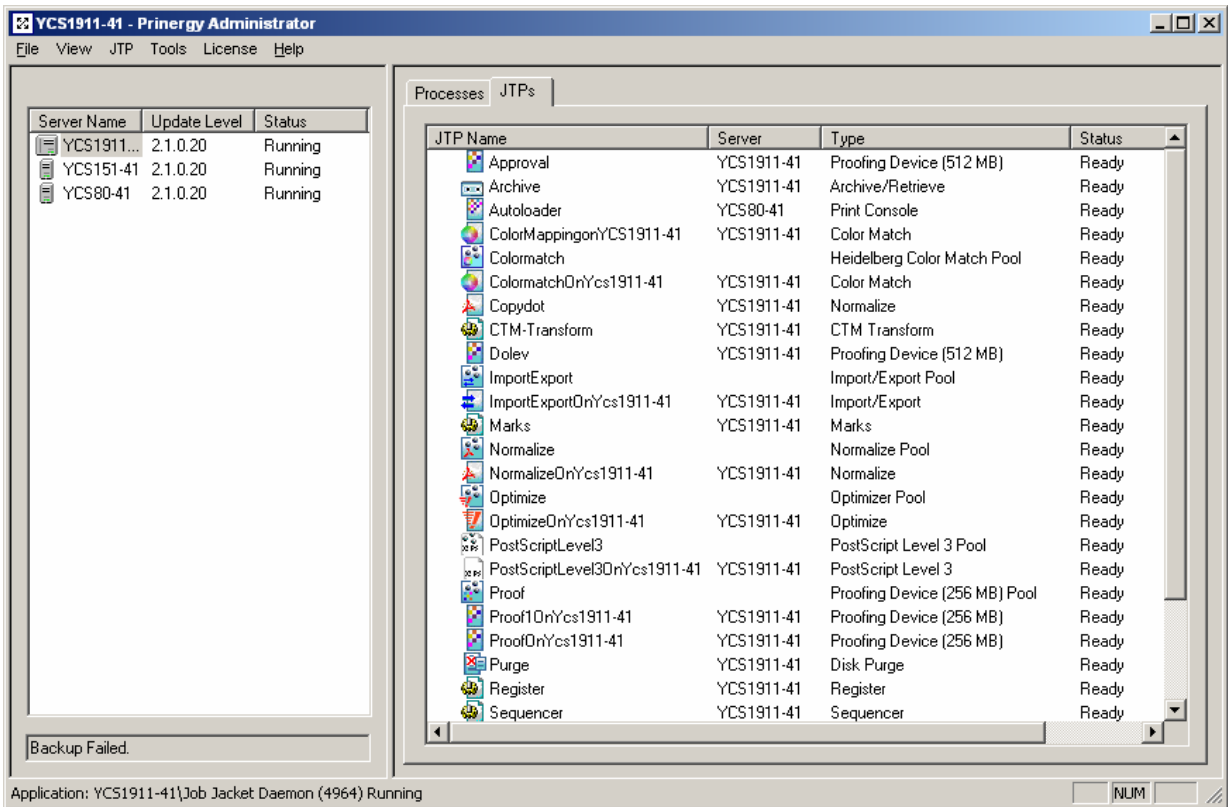


User name: ARAXI

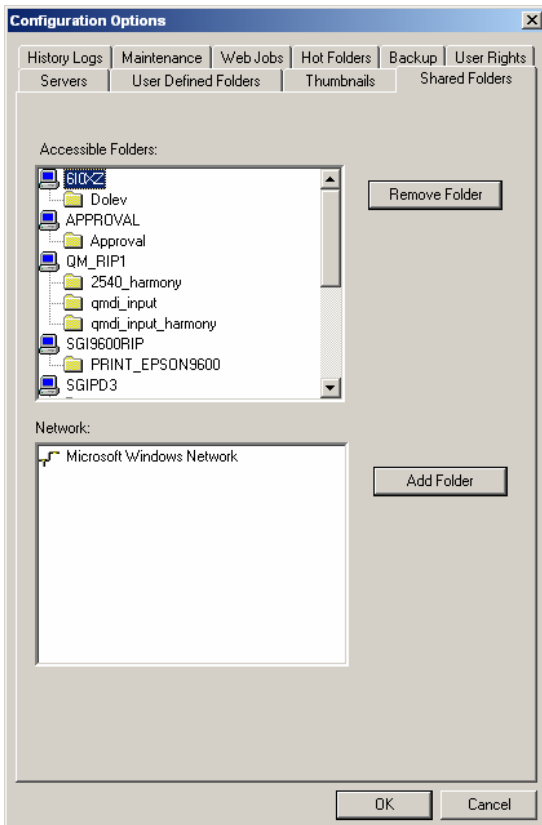
Password: ARAXI



Add the shared folder on the Prinergy Administrator like



Open Tools / Configure System



Select in the network window the PC and the share where DI-Plot is running on and click “add folder”.

