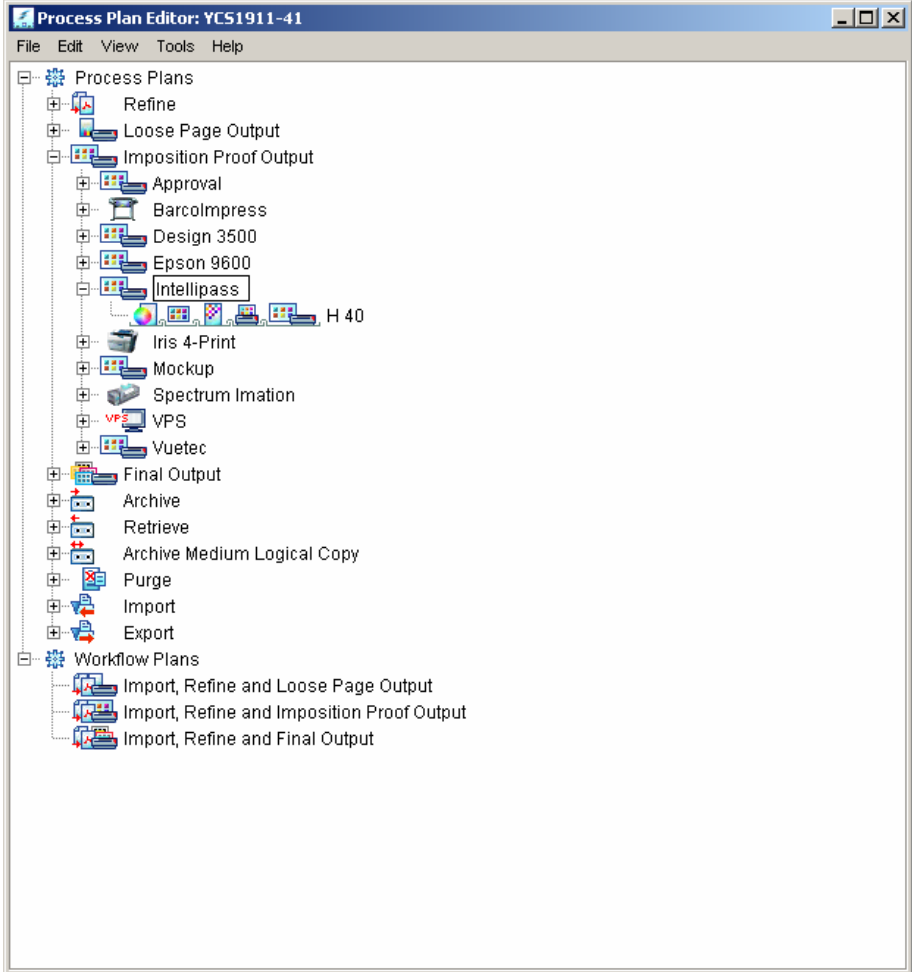


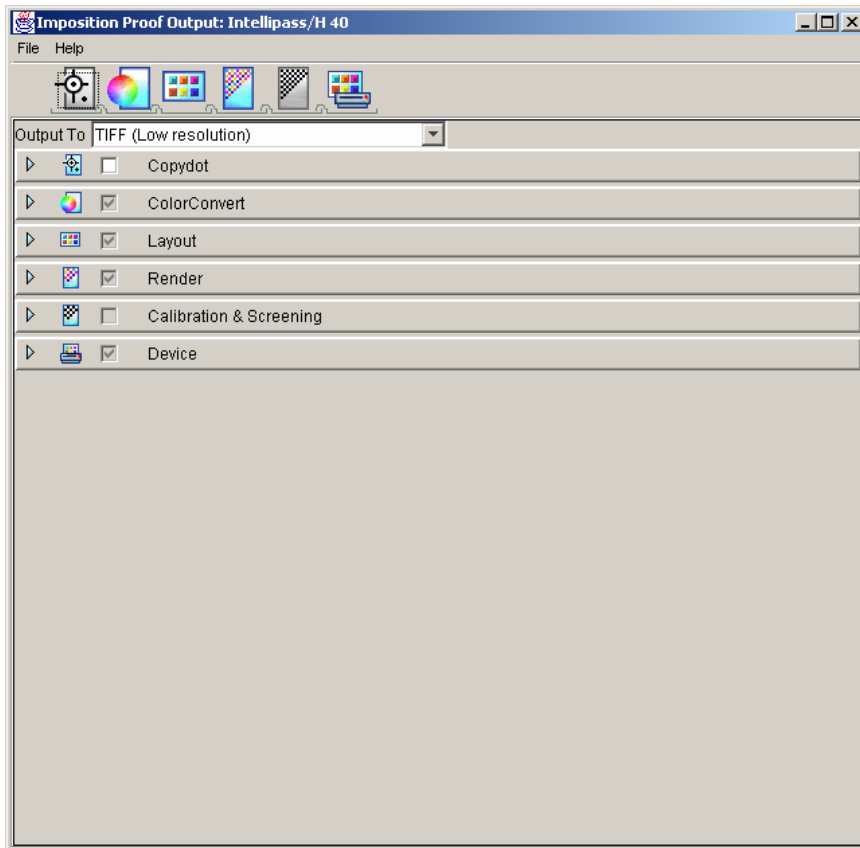
Prinerger Process Plan for usage with DI-Plot / InkzoneBox

Prinerger version 2.1
Created : 25th August 2004

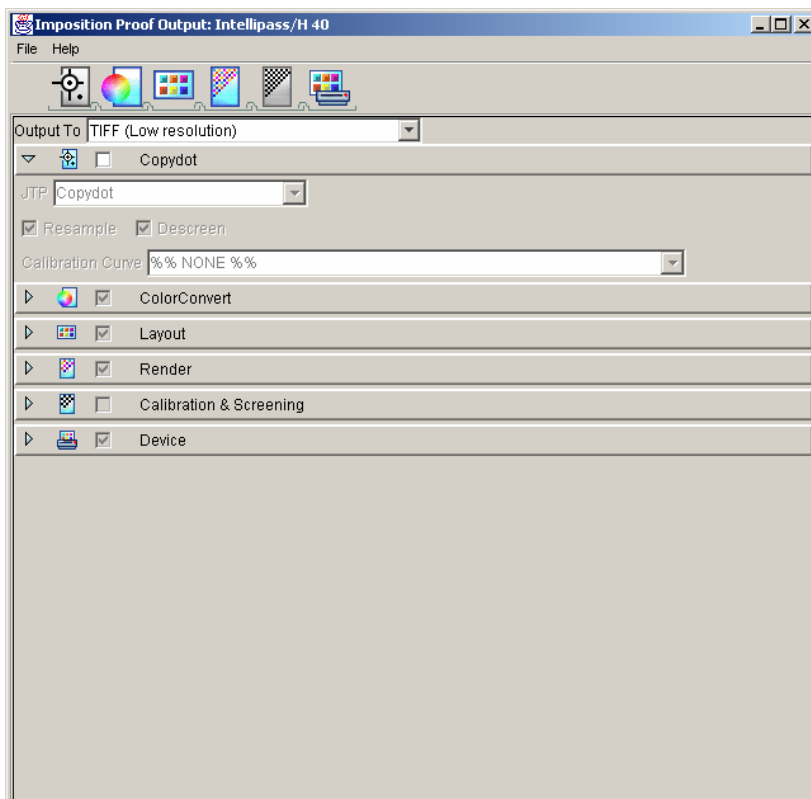
1. Open the process plan editor at a workstation

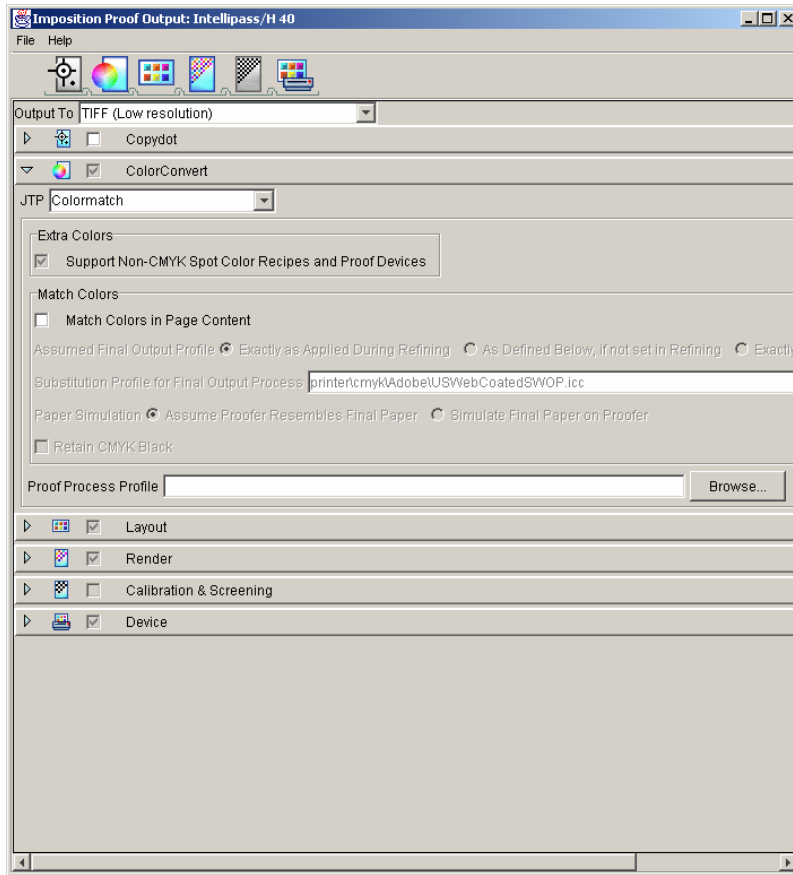


2. Duplicate an existing process plan which is used for outputting a TIFF (low resolution)

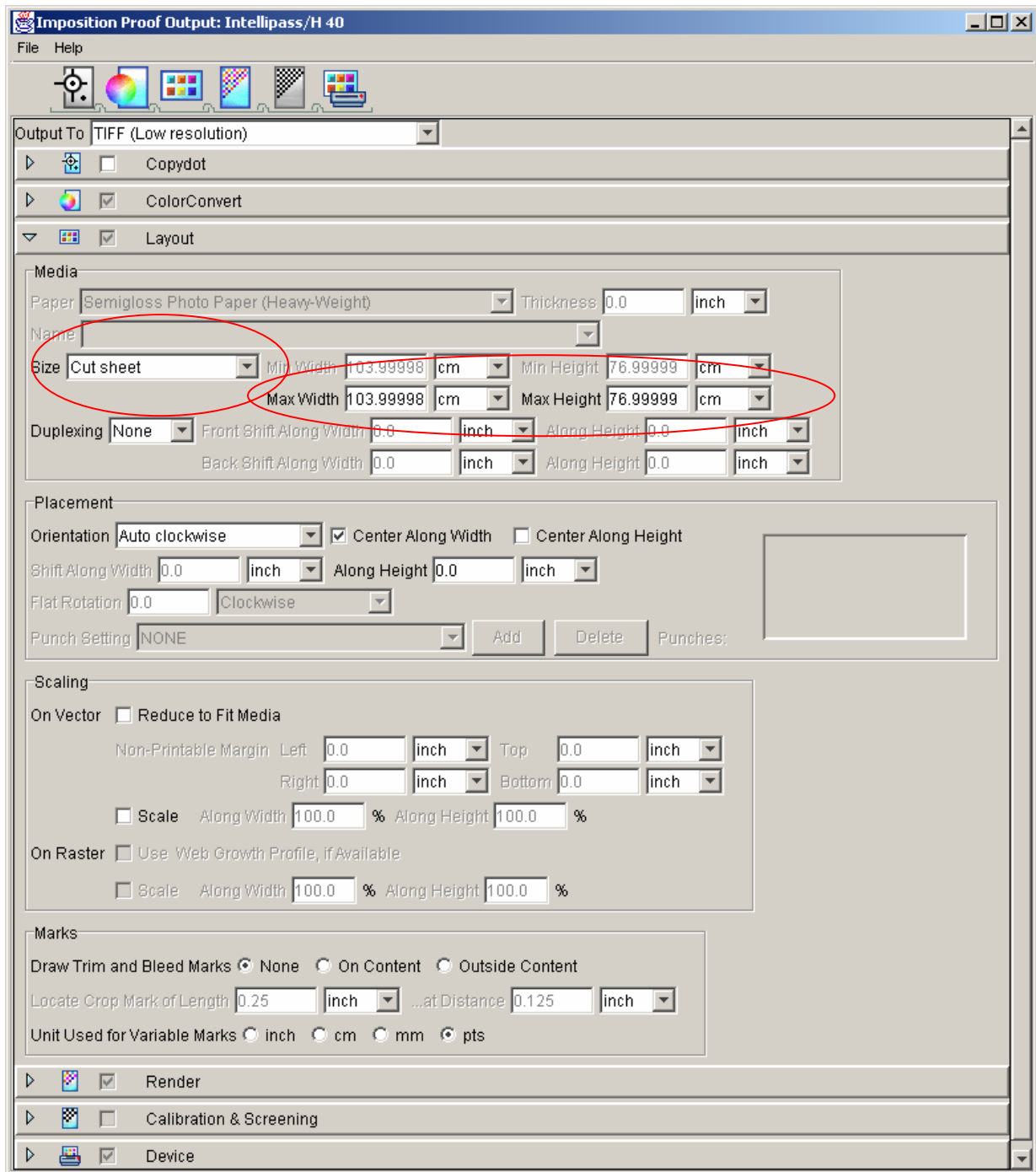


3. Set the parameters for the process plan like



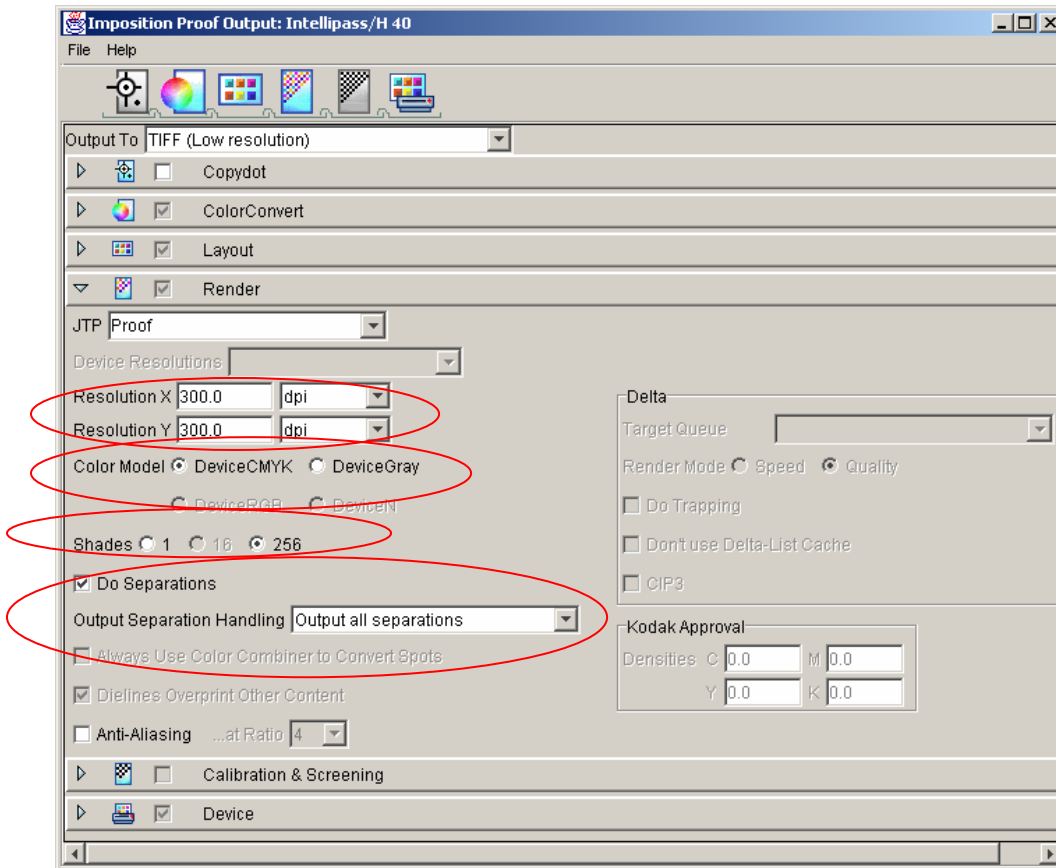


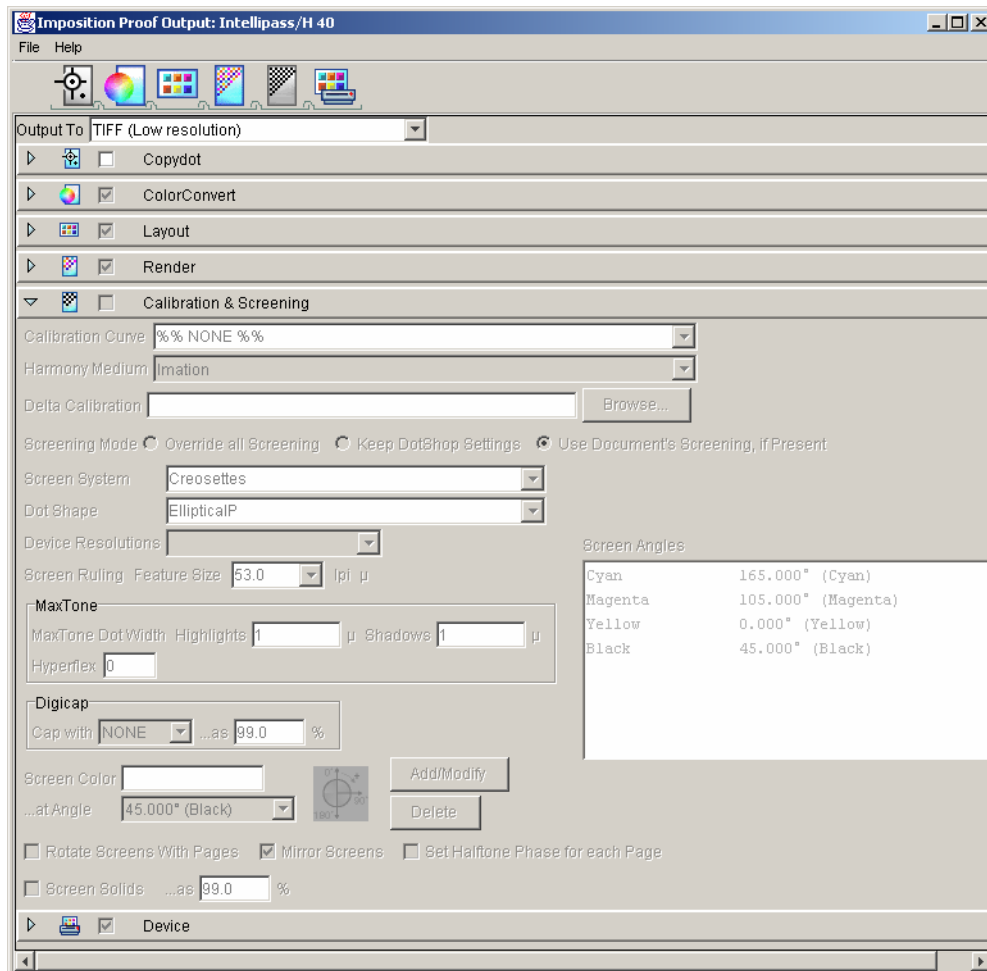
Important: enter the plate size and select “cut sheet”



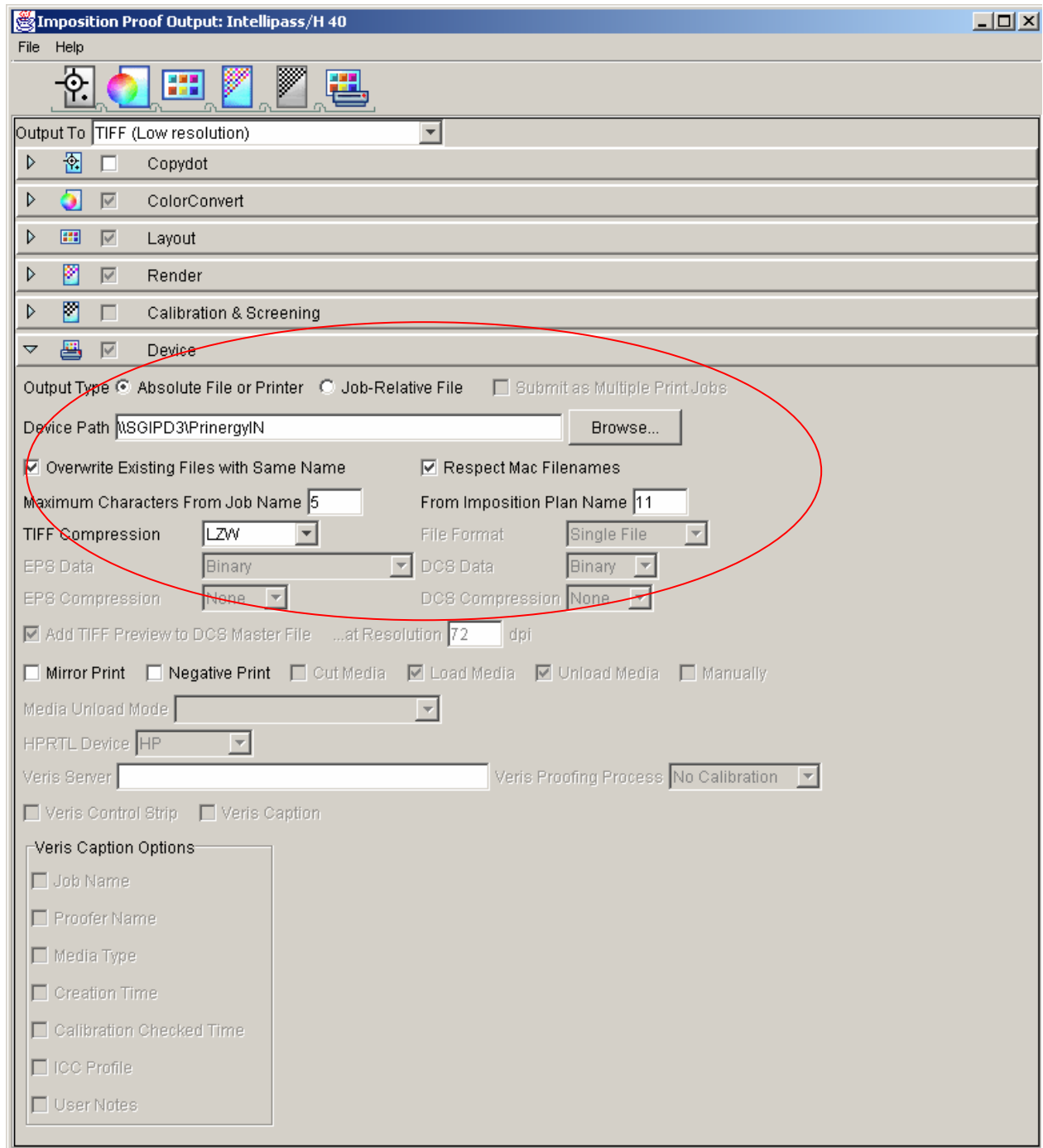
Enter a resolution like 300dpi..

Select “DeviceCMYK” as the color model, “256” shades and “do separation”





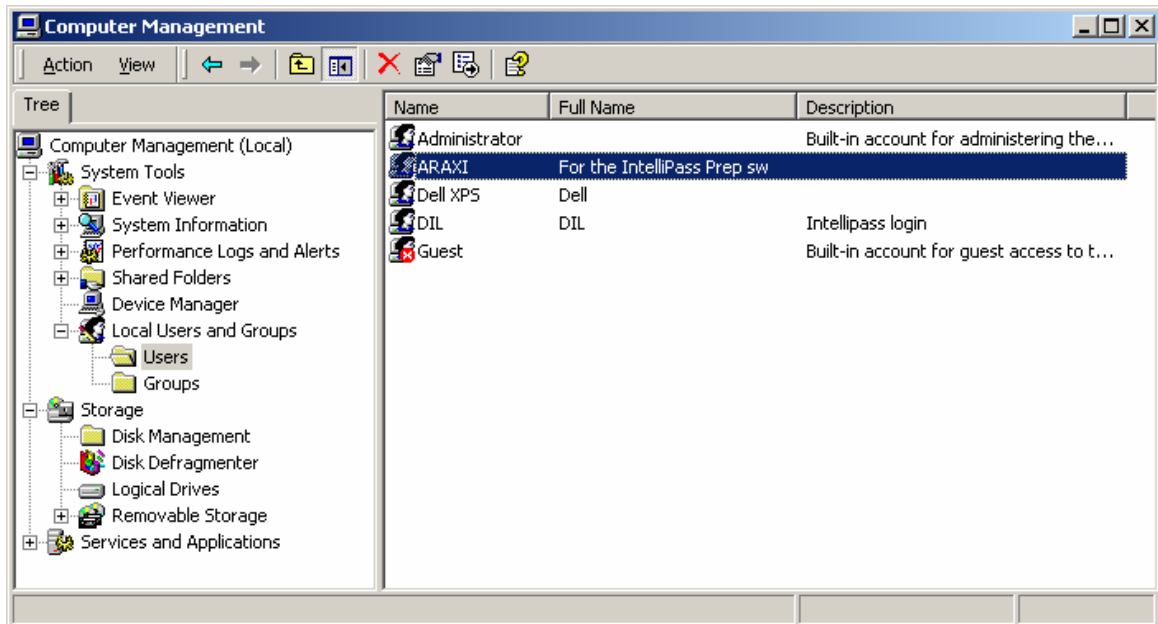
Select the output folder and choose “LZW” as a tiff compression.



Connecting the Prinergy Server to the DI-Plot PC

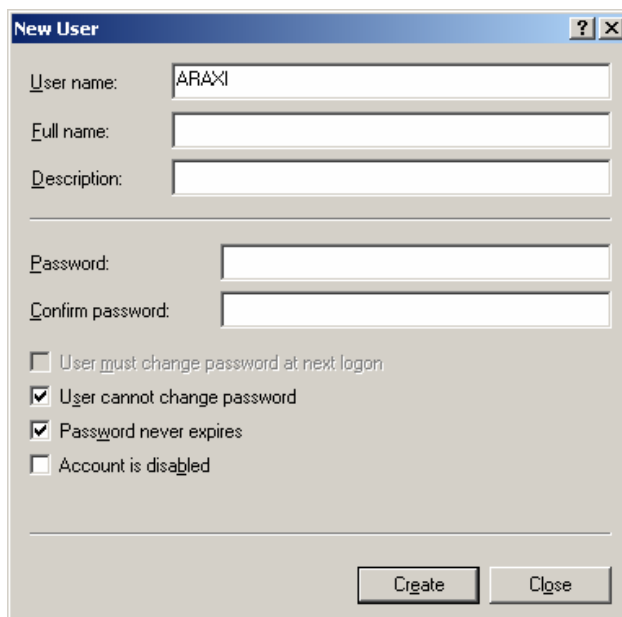
When the Prinergy server system outputs directly to the DI-Plot PC, it is necessary to create a prinergy user on the DI-Plot PC and add the shared directory in the Prinergy Administrator window.

1. Create a User on the DI-Plot PC like:

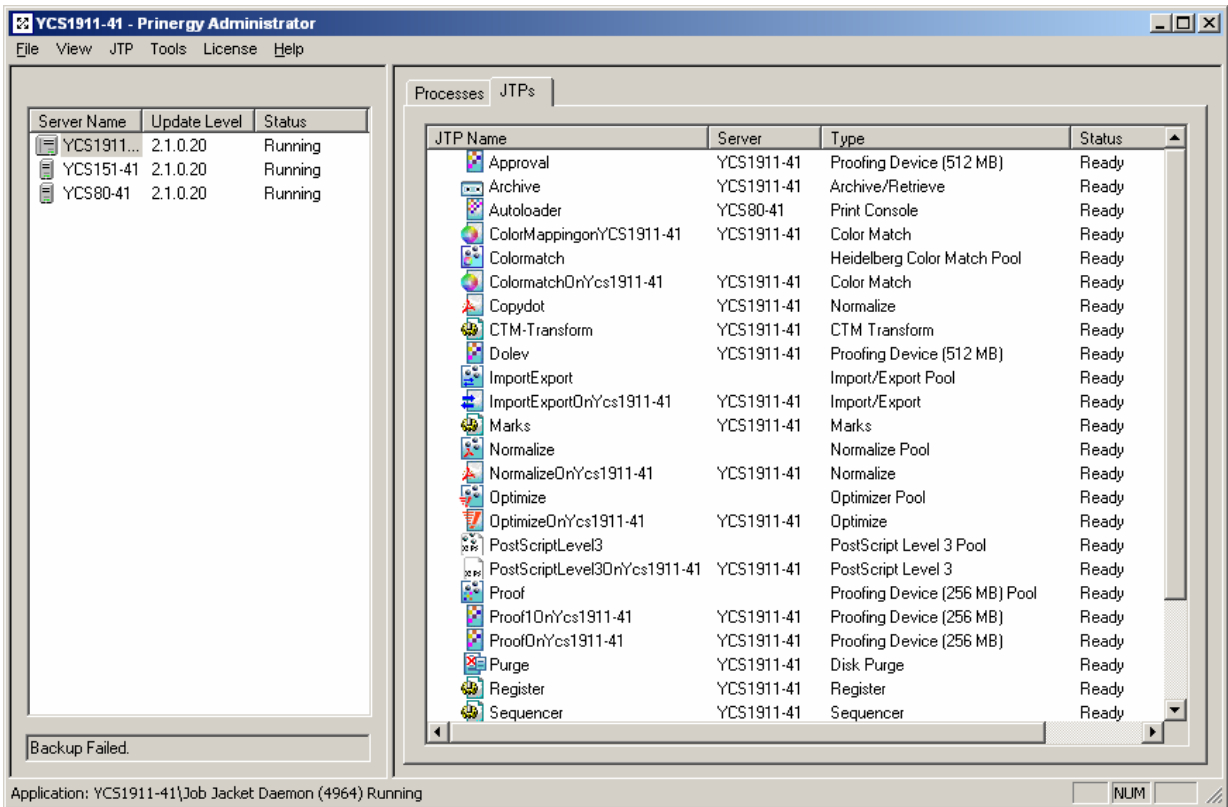


User name: ARAXI

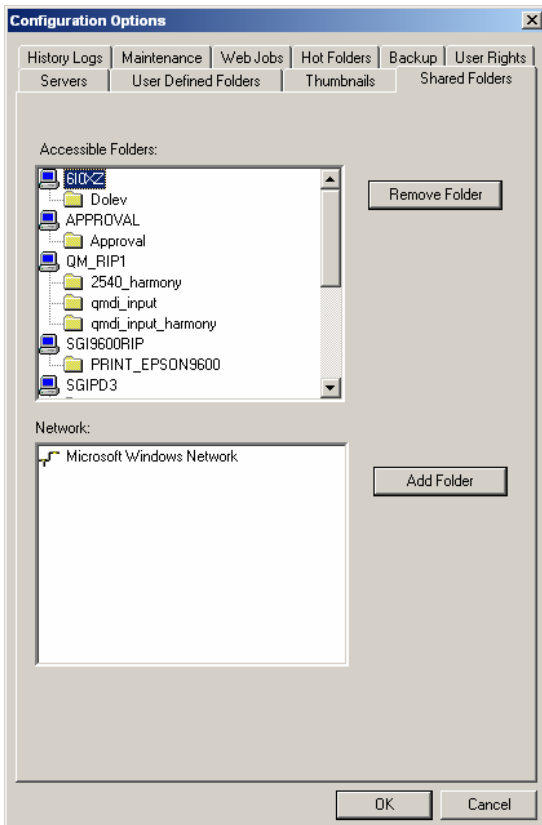
Password: ARAXI



Add the shared folder on the Prinergy Administrator like



Open Tools / Configure System



Select in the network window the PC and the share where DI-Plot is running on and click “add folder”.

