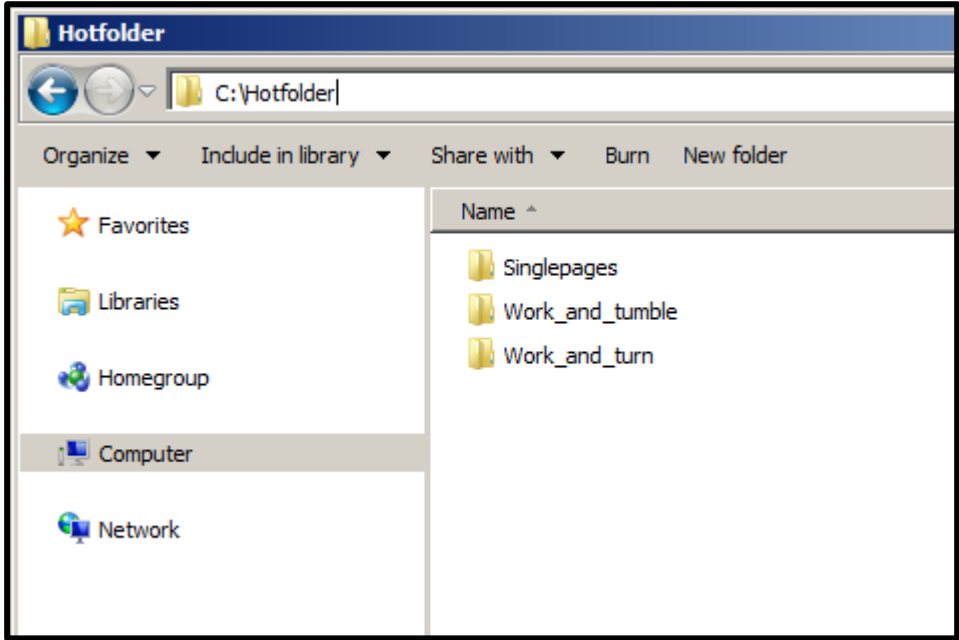
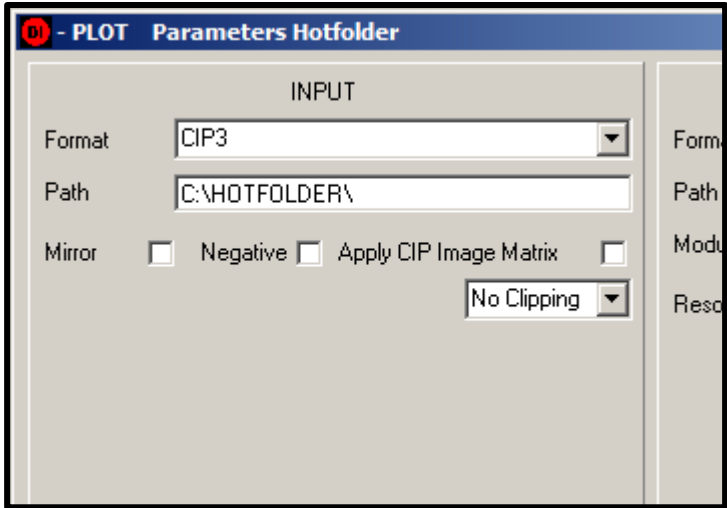


Setup DJet for Multiple Imposition Work Types

- 1 Create a base hot folder. Then create for each imposition work type its own subfolder in the hotfolder.

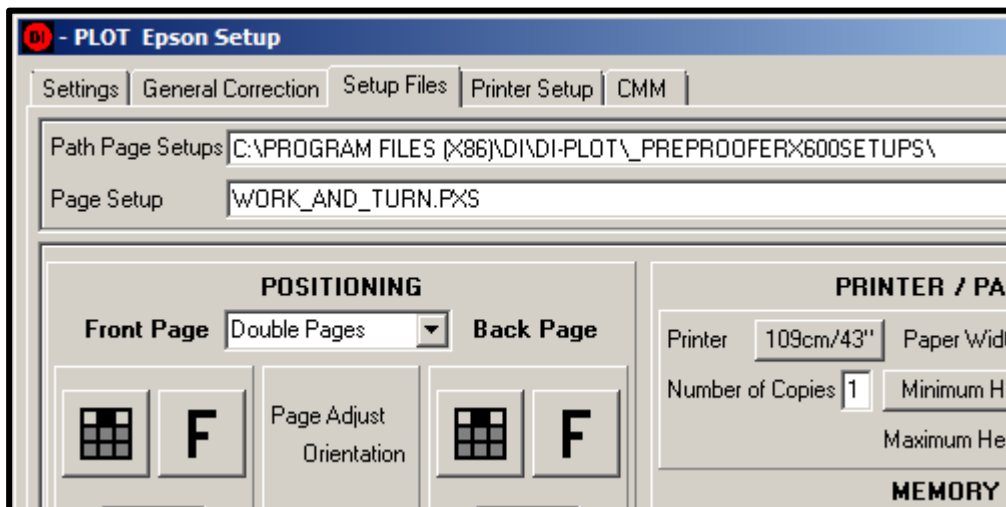
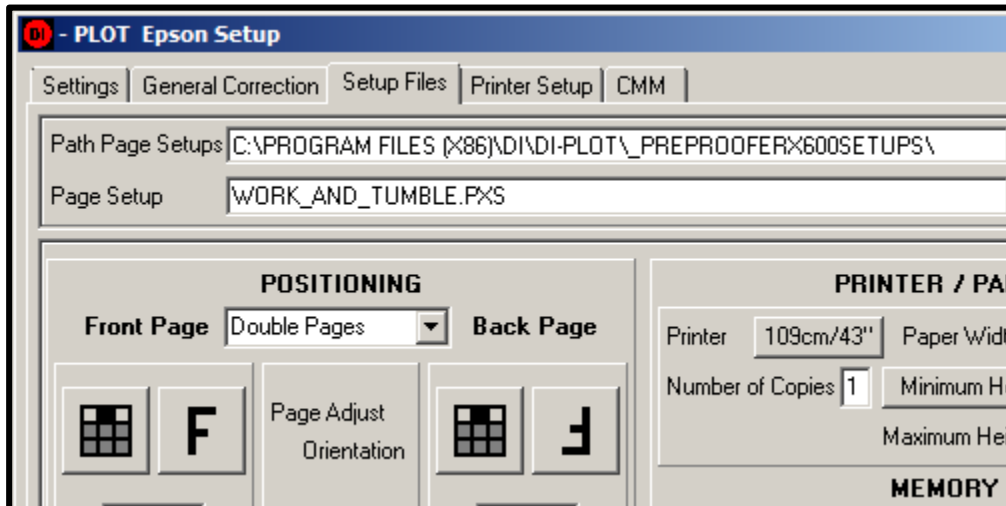
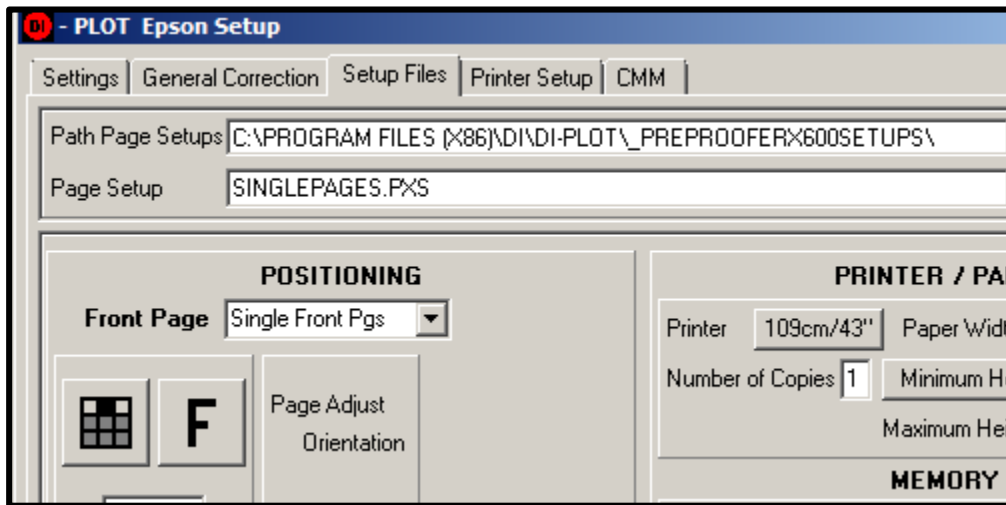


- 3 Set in DI-Plot the base folder as the input folder



2

Create in DI-Plot the page setups and store them with the same name as the subfolders inside the base folder.



3

Open the menu "Parameter→ Time Intervall Hotfolder" and set the parameter "Time Lapse" according to workflow TIFF output performance.

The parameter "TimeLapse" sets the "timeout" before the TIFF file is processed. Additionally it defines the "waiting time" for the Back side before the job is processed as a single job.

Note: if the system prints single pages instead of double pages, the value "Time Lapse" might be too low. Double the value and try again.

