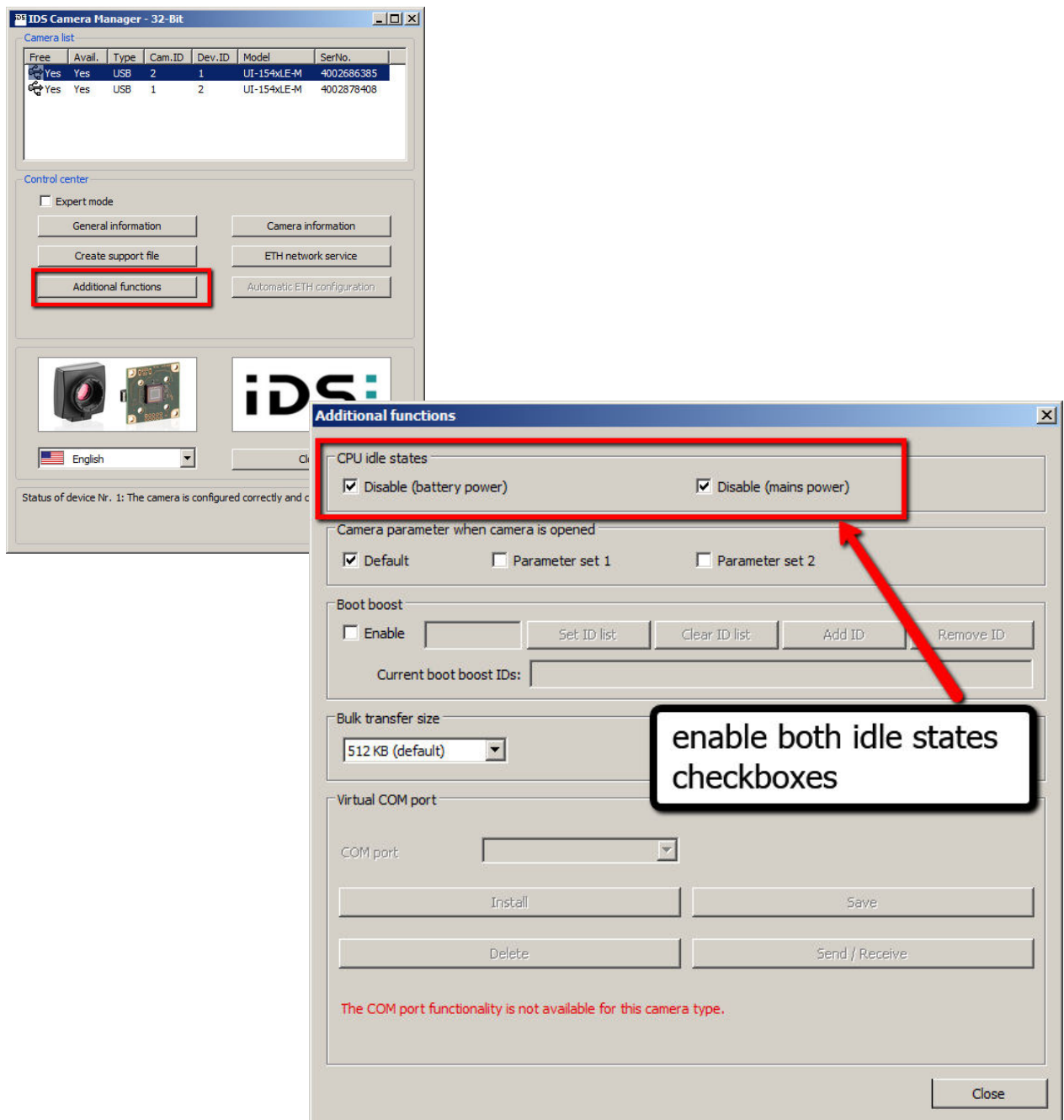


uEye Camera driver 4.21 with Core i3, i5 and i7 Intel CPUs

Modern processors and operating systems are designed to be energy efficient. This can also have unwanted effects. In the modern Core i3/i5/i7 Intel processors, the USB bus is also optimized to operate in a power-saving, energy-efficient manner.

As a result, uEye USB cameras cannot be operated using the maximum available frame rate in this mode. Use IDS Camera Manager's CPU Idle-States settings (accessible via 'Additional functions' button) to ensure the full performance of the USB bus in connection with a uEye industrial camera.



This setting avoids the problem with transferring data from the camera to the pc.

