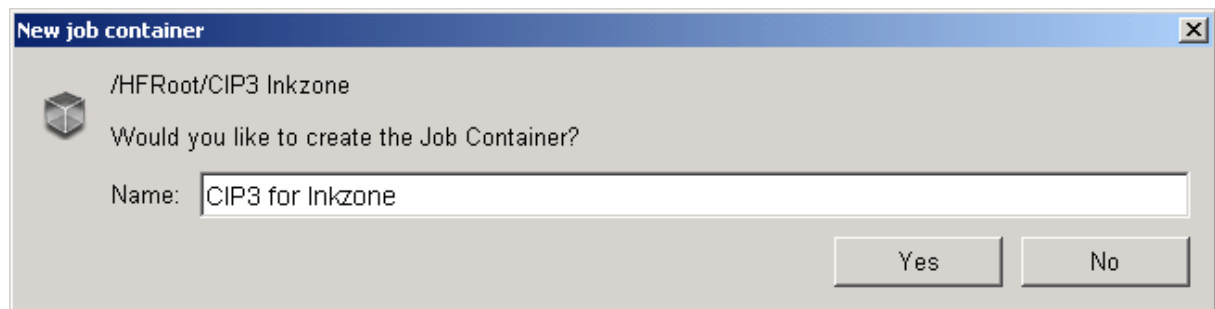
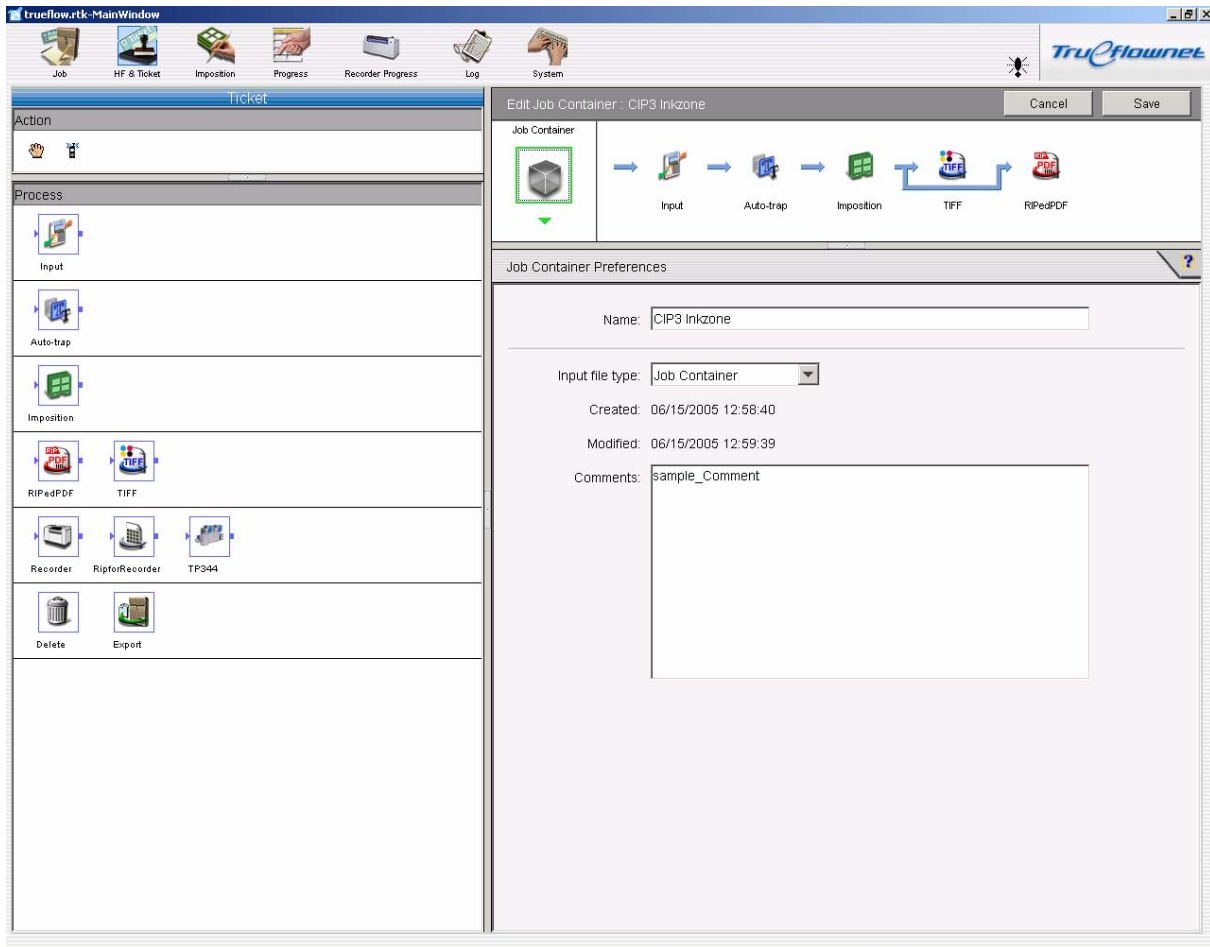


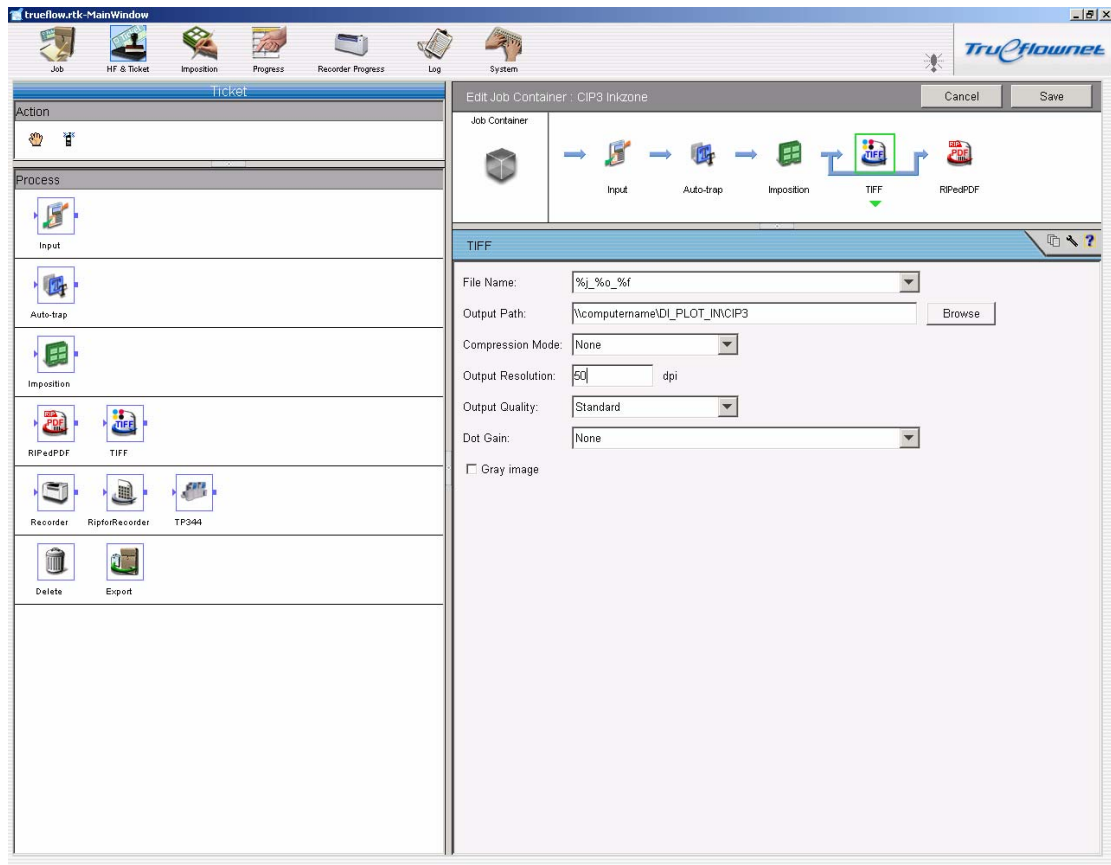
Screen Trueflow 3.0

Connection to DI-Plot for Inkzone

1. Create a new Job container



2. Create a tiff output like - for Inkzone 50dpi



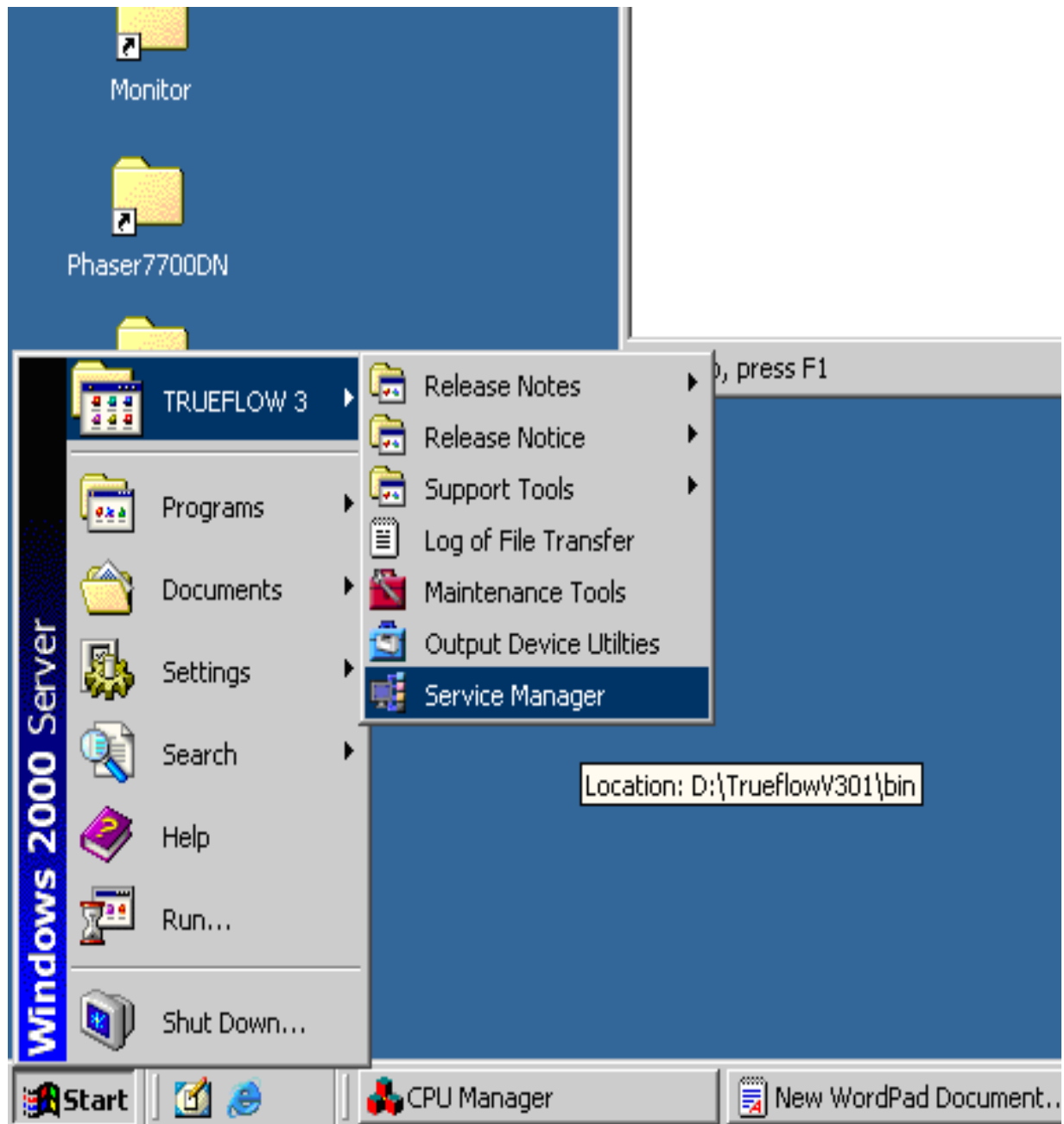
3. Create a pdf output like - for Inkzone 50dpi

The screenshot displays the Trueflow.net software interface. The main window is titled "trueflow.rtk-MainWindow" and features a menu bar with options: Job, HF & Ticket, Imposition, Progress, Recorder Progress, Log, and System. The interface is divided into several sections:

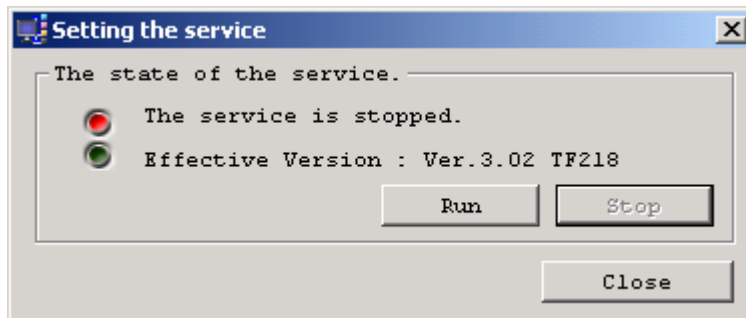
- Job Container:** "Edit Job Container : CIP3 Inkzone" with "Cancel" and "Save" buttons.
- Process Flow:** A sequence of steps: Input → Auto-trap → Imposition → TIFF → RIPedPDF.
- RIPedPDF Settings:**
 - File Name: [%j_%o_%f]
 - Output Path: \\computername\DI_PLOT_INCI3 (with a "Browse" button)
 - Output Resolution: 50 dpi
 - Image Resolution Ratio: 2
 - Image Compression Type: None
 - JPEG: Standard
 - Preview
 - Preview Image Resolution: 50 dpi
- Process Panel:** A vertical list of icons for "Input", "Auto-trap", "Imposition", "RIPedPDF", "TIFF", "Recorder", "RipforRecorder", "TP344", "Delete", and "Export".

Add the file share into the workflow

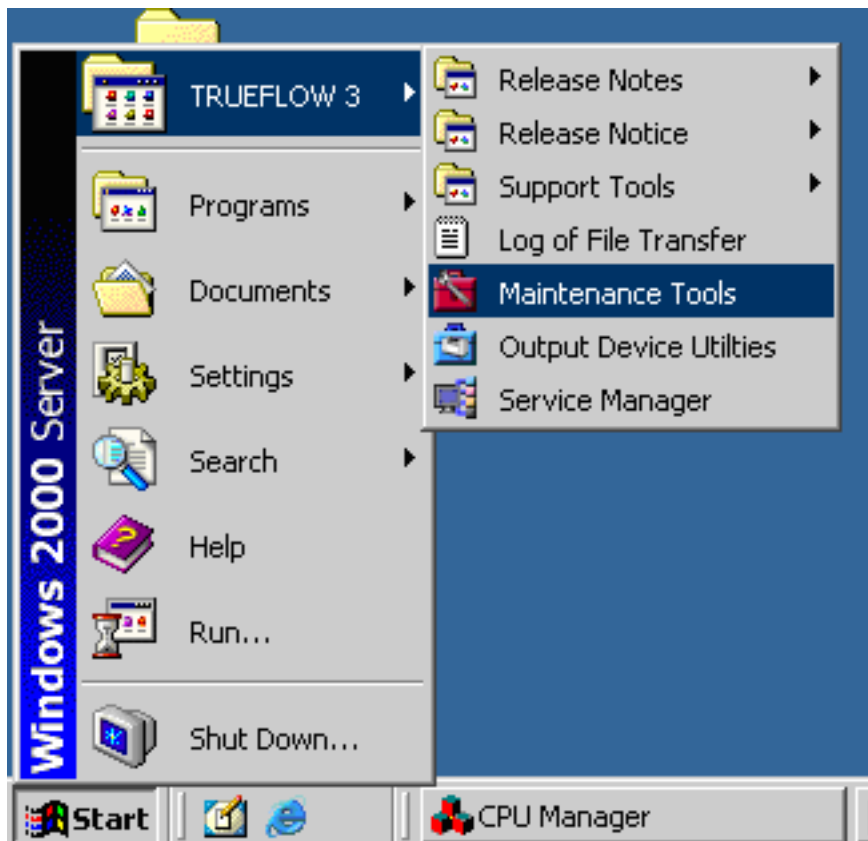
1. Open the Service Manager in the program menu:



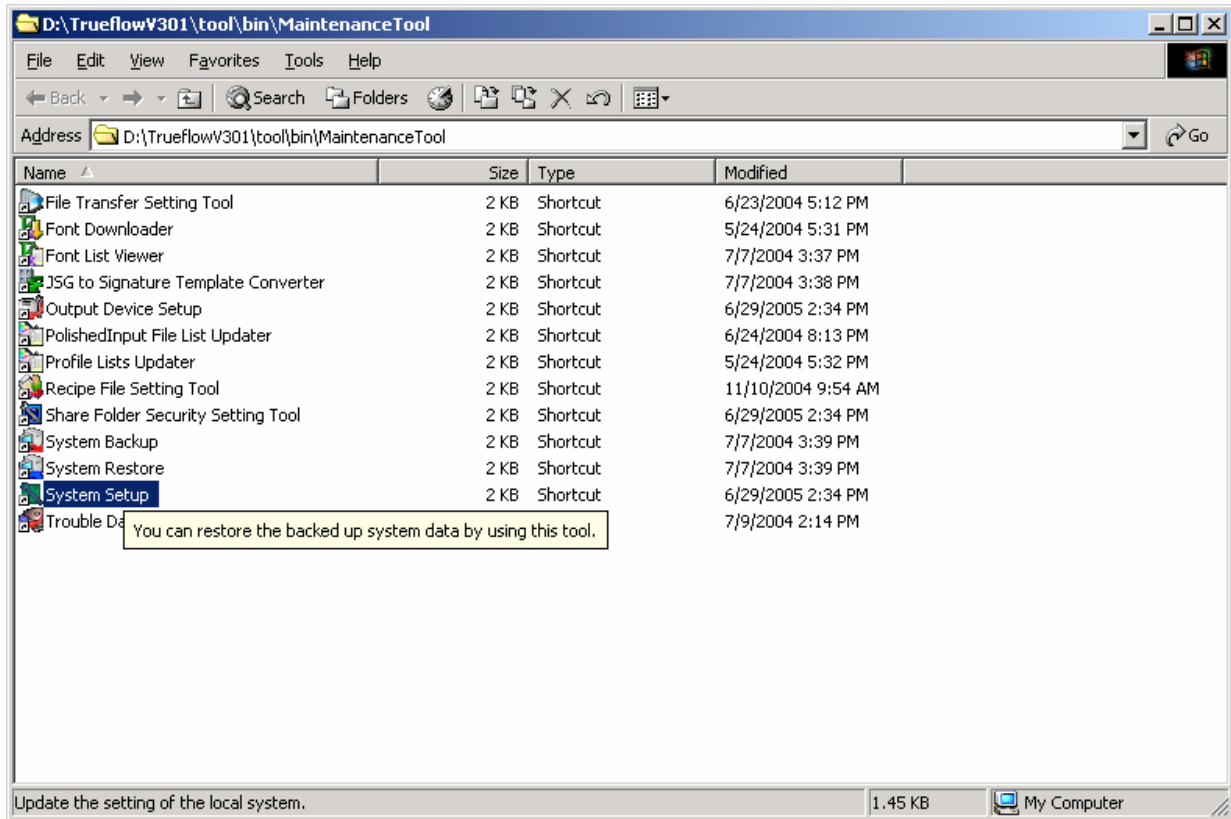
2. Stop the service



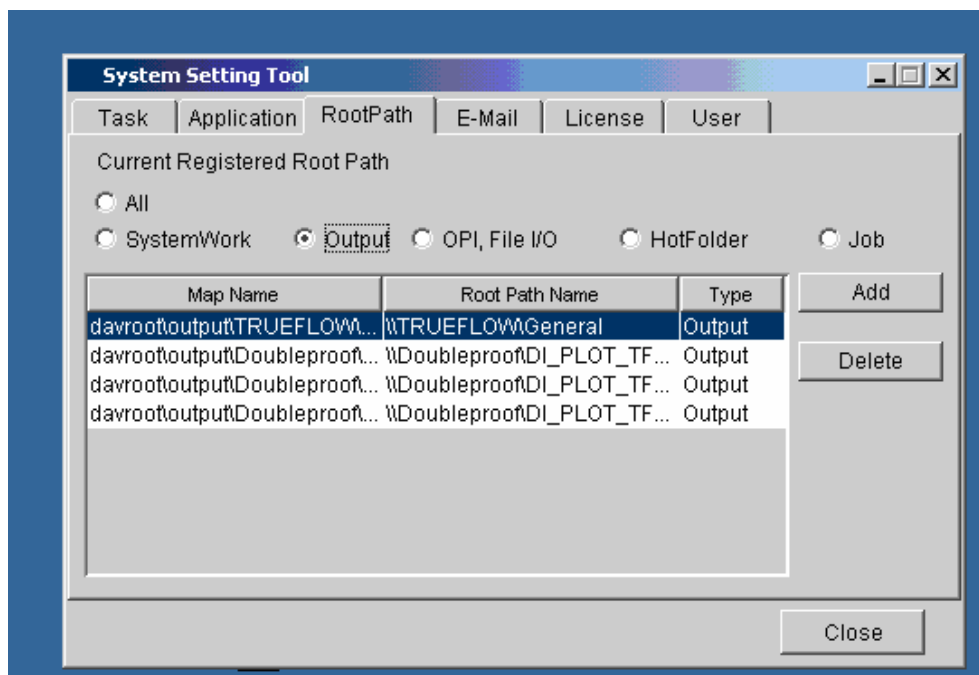
3. Open the Maintenance tools



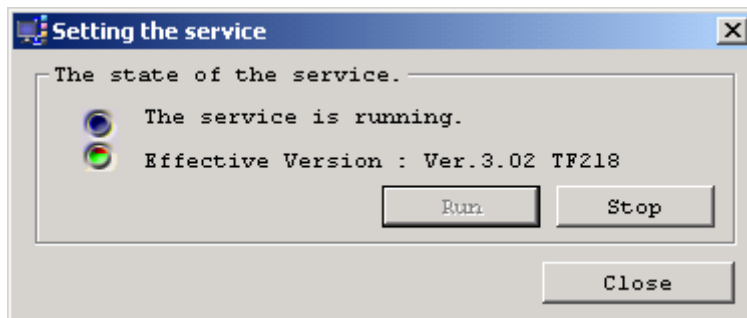
4. Start the System Setup



5. Add the here the shared network drive from DI-Plot PC



6. Start the service



7. Setup in DI-Plot

Use the Input filter called TRUEFLOW

