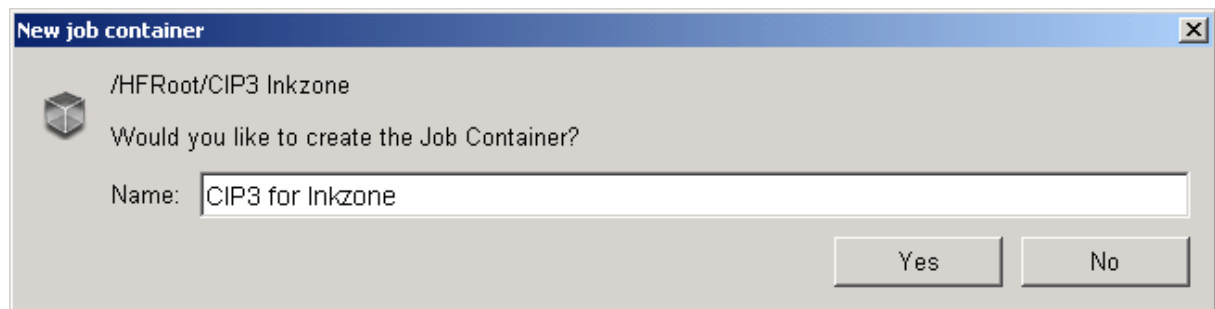
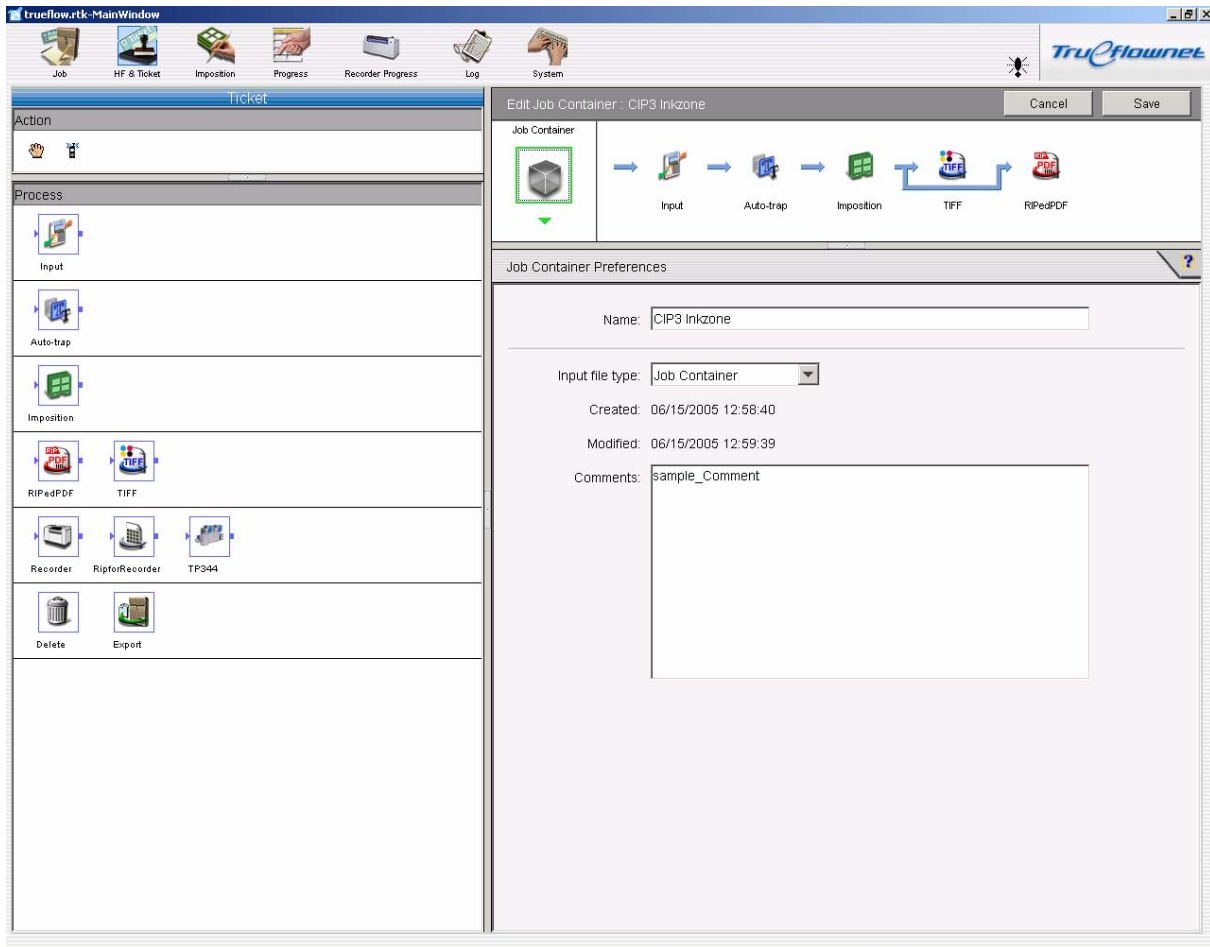


# Screen Trueflow 3.0

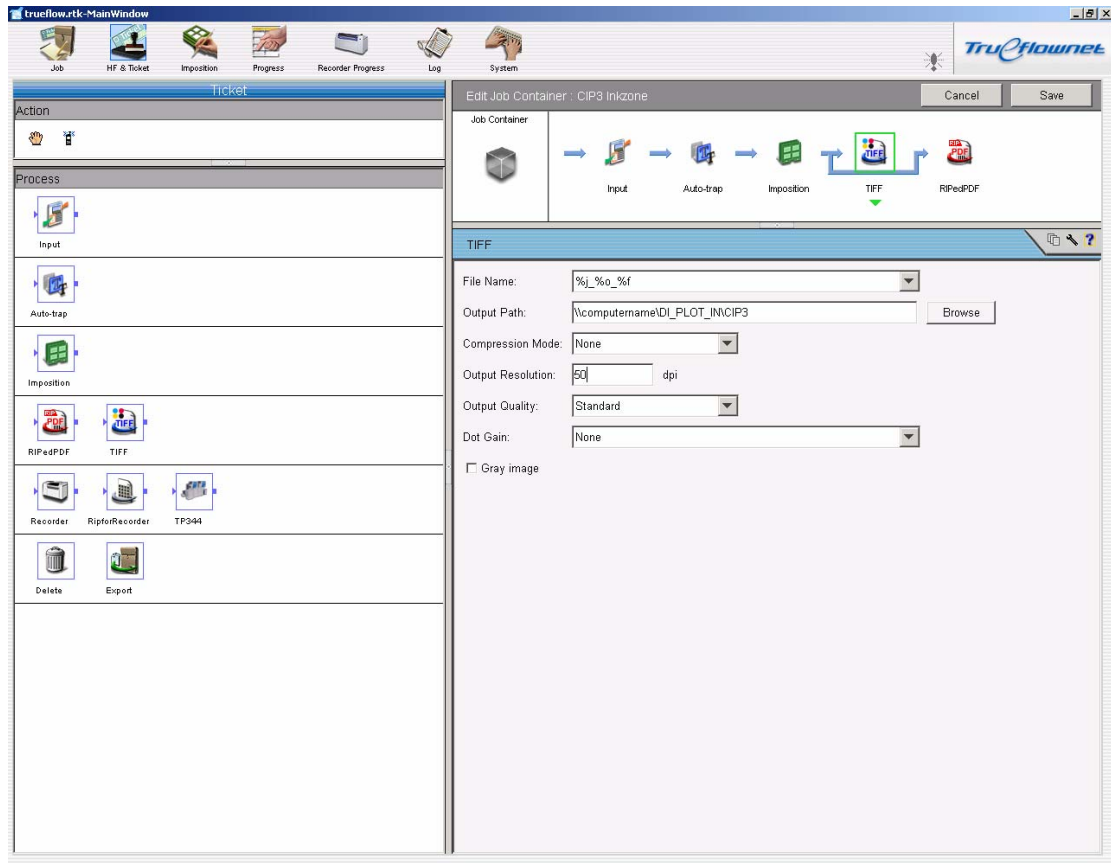
## Connection to DI-Plot for Inkzone/Preproofer

### 1. Create a new Job container



## 2. Create a tiff output like

- for Inkzone 50dpi
- for Preproofer 300dpi



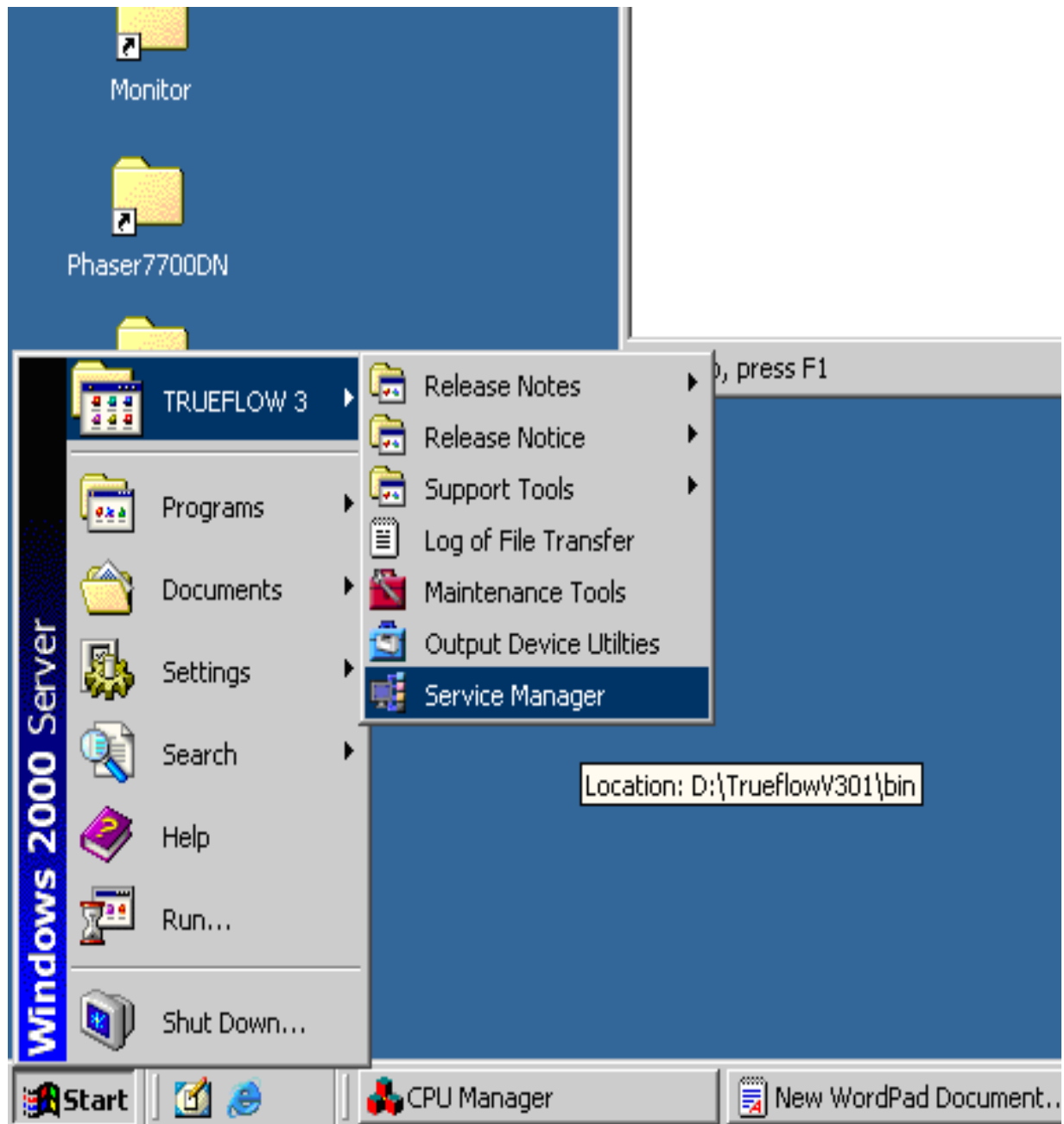
### 3. Create a pdf output like - for Inkzone and Preproofer 50dpi

The screenshot displays the Trueflow.net software interface. The main window is titled "trueflow.rtk-MainWindow" and features a menu bar with options: Job, HF & Ticket, Imposition, Progress, Recorder Progress, Log, and System. The interface is divided into several sections:

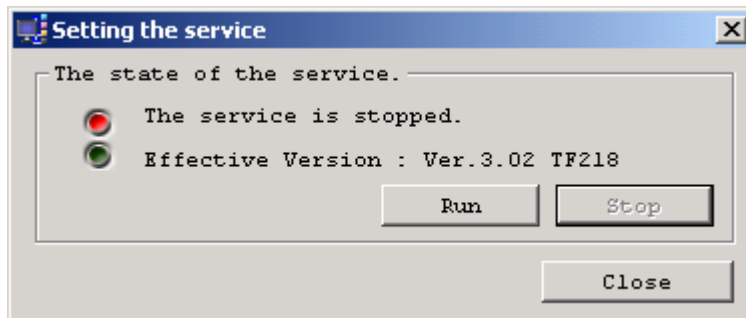
- Job Container:** "Edit Job Container : CIP3 Inkzone" with "Cancel" and "Save" buttons.
- Process Flow:** A sequence of icons representing the workflow: Input, Auto-trap, Imposition, TIFF, and RIPedPDF.
- RIPedPDF Settings:**
  - File Name: %j\_%o\_%f
  - Output Path: \\computername\DI\_PLOT\_INCI3 (with a "Browse" button)
  - Output Resolution: 50 dpi
  - Image Resolution Ratio: 2
  - Image Compression Type: None
  - JPEG: Standard
  - Preview
  - Preview Image Resolution: 50 dpi
- Process Panel:** A vertical list of process steps with icons: Input, Auto-trap, Imposition, RIPedPDF, TIFF, Recorder, RipforRecorder, TP344, Delete, and Export.

# Add the file share into the workflow

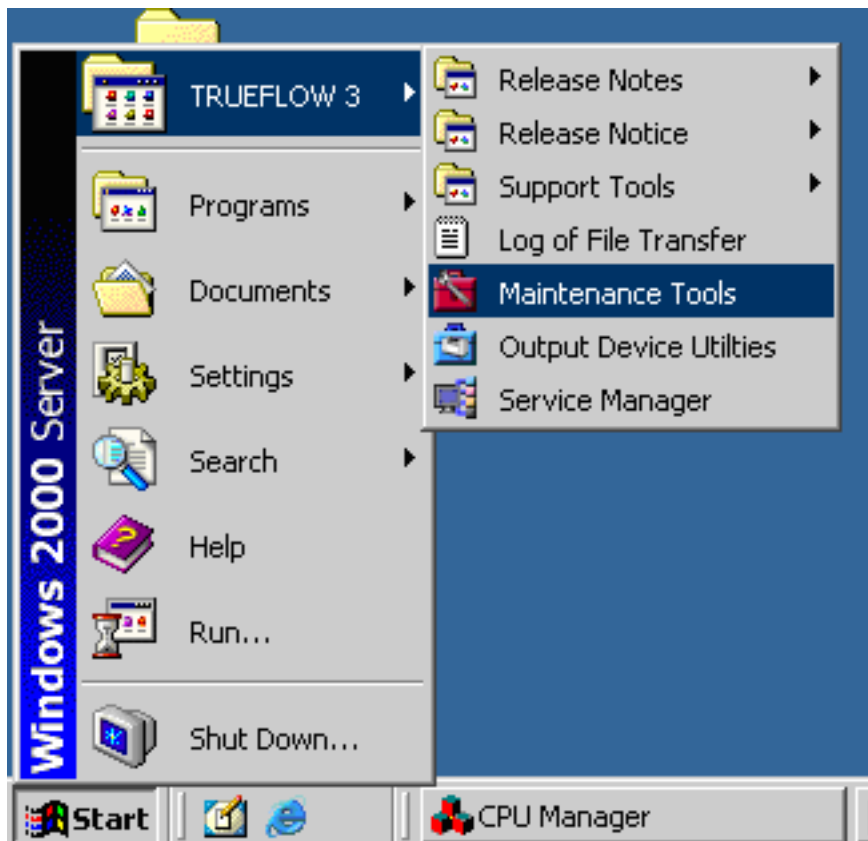
1. Open the Service Manager in the program menu:



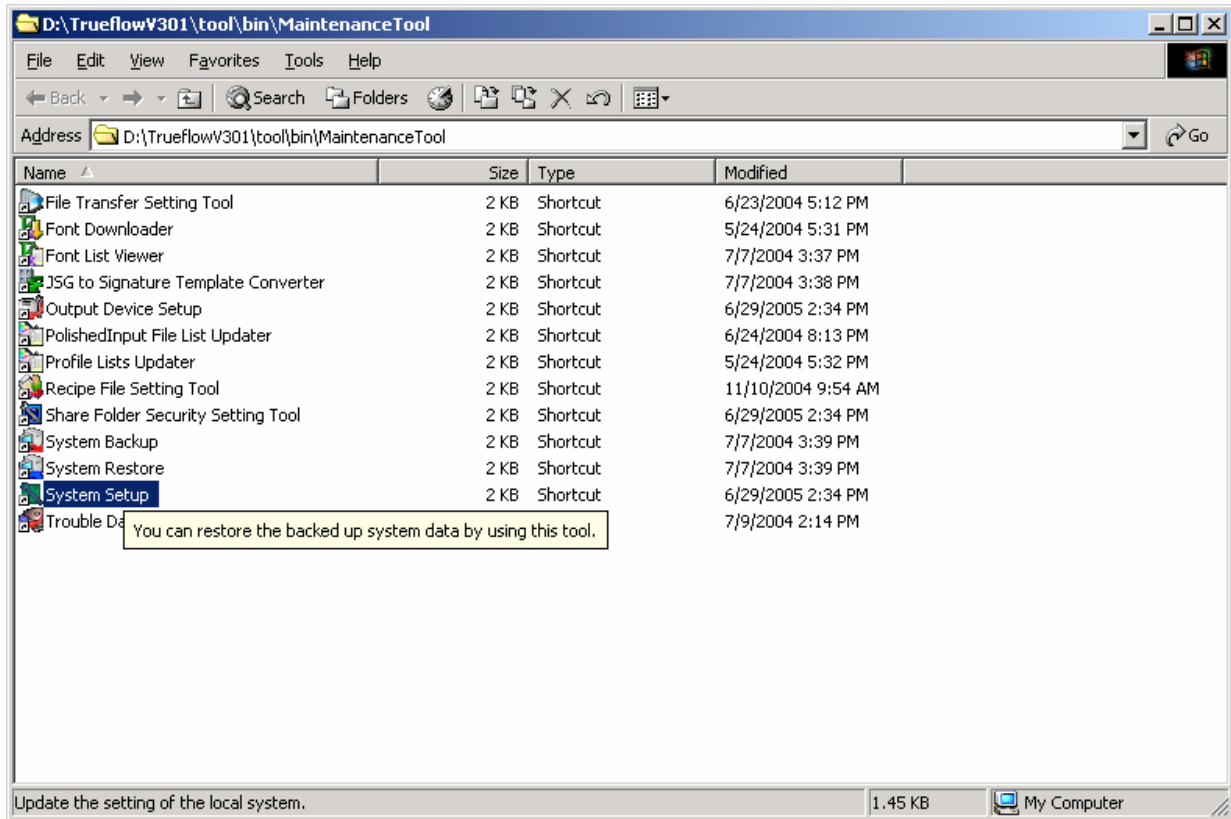
## 2. Stop the service



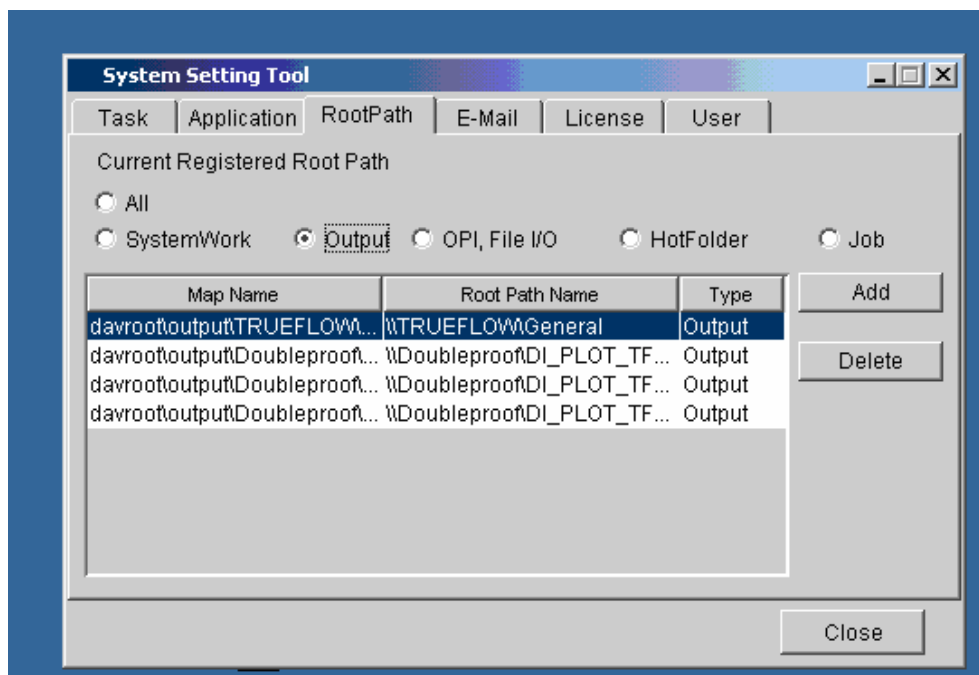
## 3. Open the Maintenance tools



#### 4. Start the System Setup



#### 5. Add the here the shared network drive from DI-Plot PC



## 6. Start the service

