

Agfa Apogee – DI-Plot connection with PS Proofer Output

1. On the Print Drive, choose the Device List

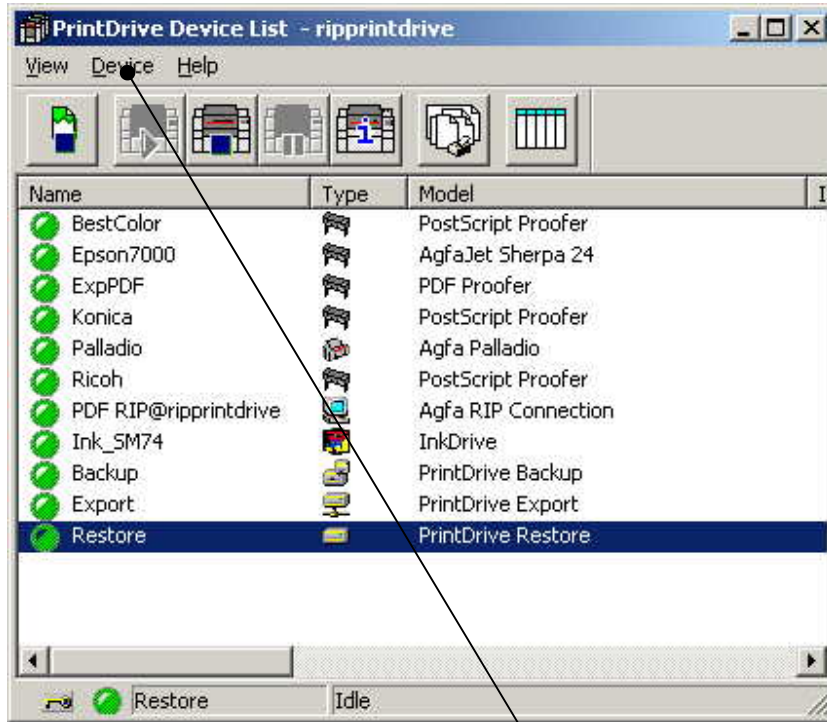


Image 1

Within the "Print Drive Device List" choose "Create new Device" and enter the "Device Wizard". Select "Proofer"

4. Select "Proofer" from some list

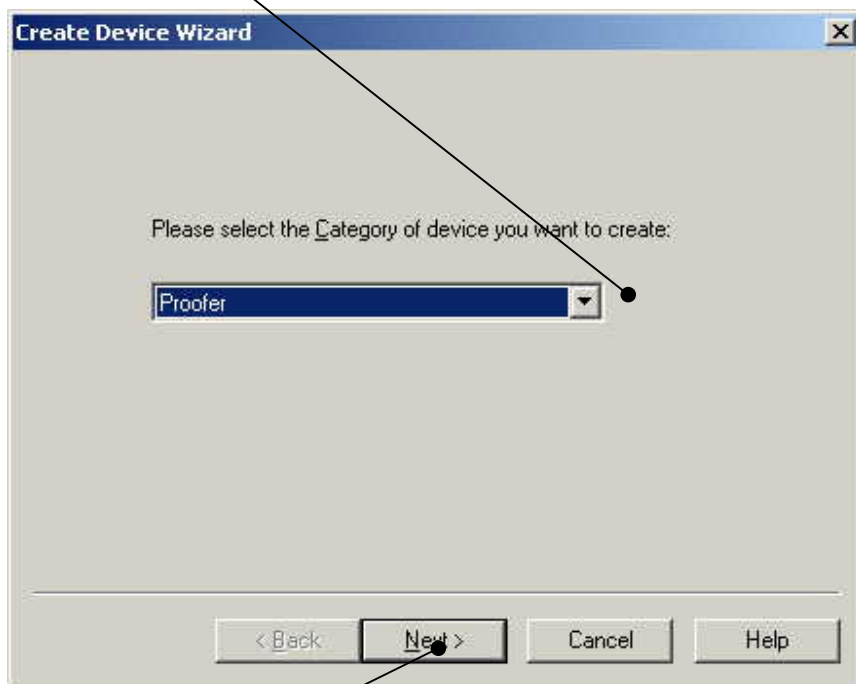


Image 2

5. Click on "NEXT"

6. Select "PostScript Proofer" from some list.

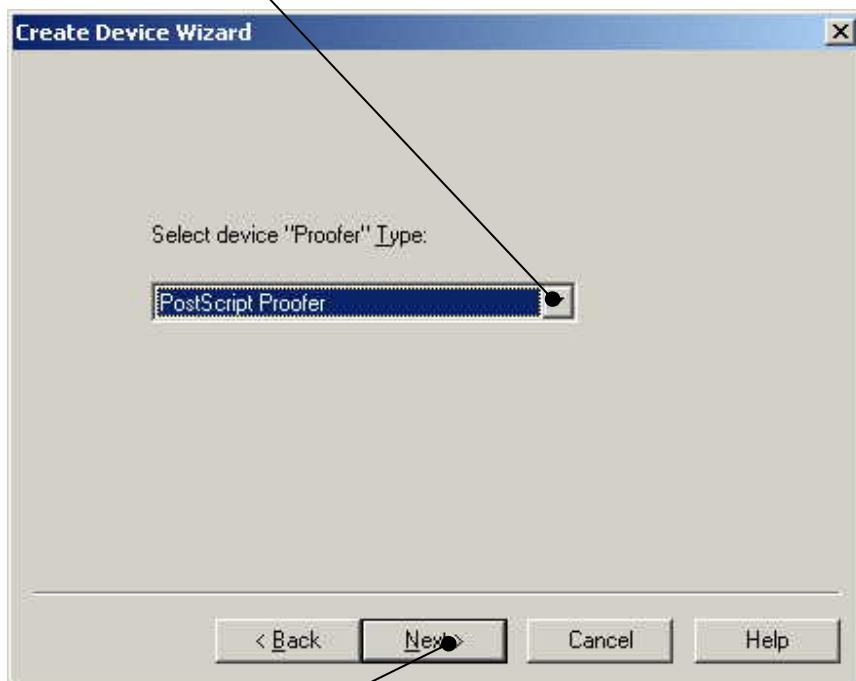


Image 3

7. Click on "NEXT"

8. Enter a Name for this Output Device (e.g. OEC_9400).



Image 4

9. Click on "Create"

10. Within the menu "Connection", define the Output Path for us it could be E:\InkZoneBox and
11. Choose the extension "ps"

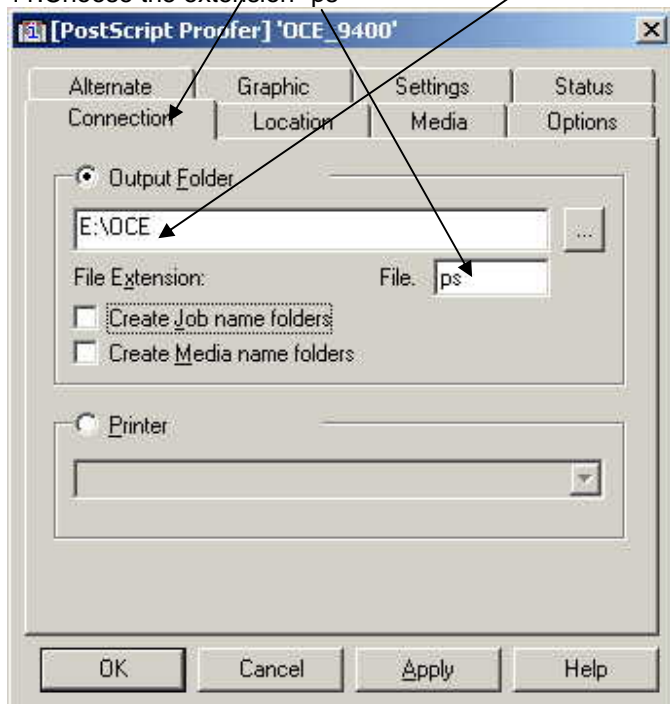


Image 5

12. Within the menu "Settings", define 12a "Binary" and "12b Run Length Encoding (PackBits)".

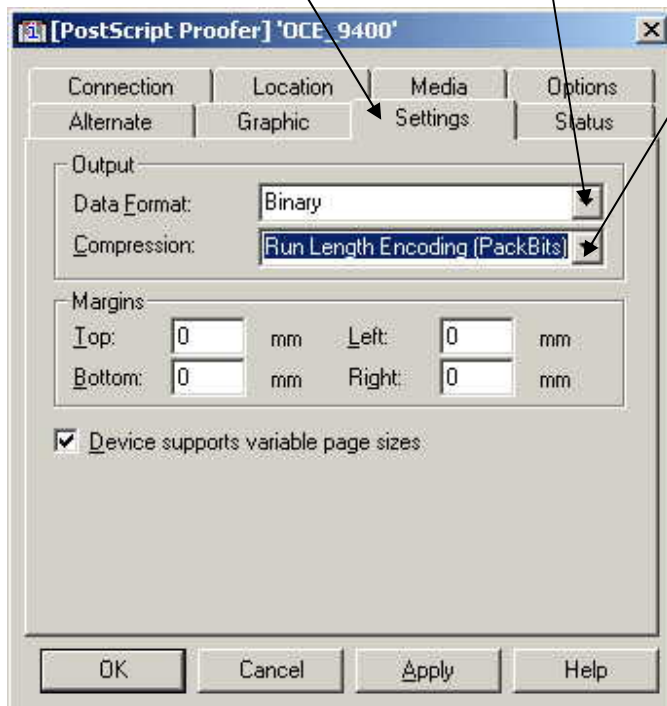


Image 6

13. Within the menu "Options", define "Separations"

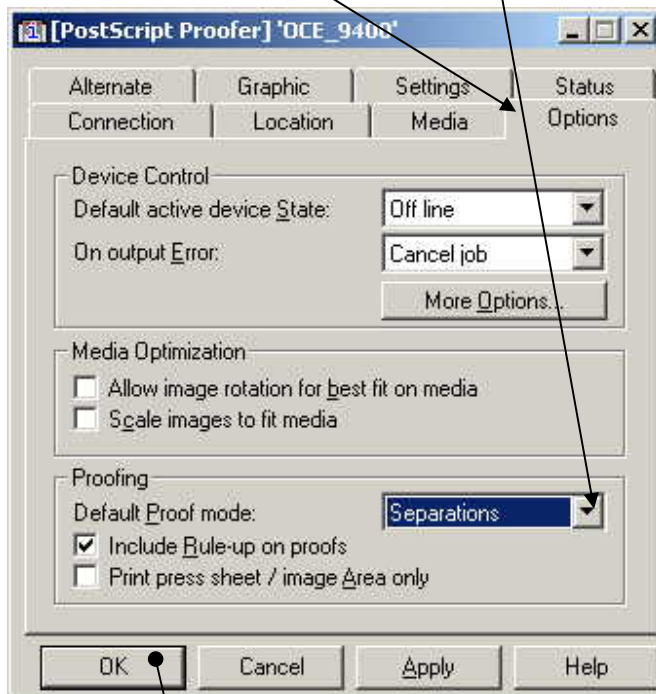


Image 7

14. Click on OK