

**Digital Information Ltd.**

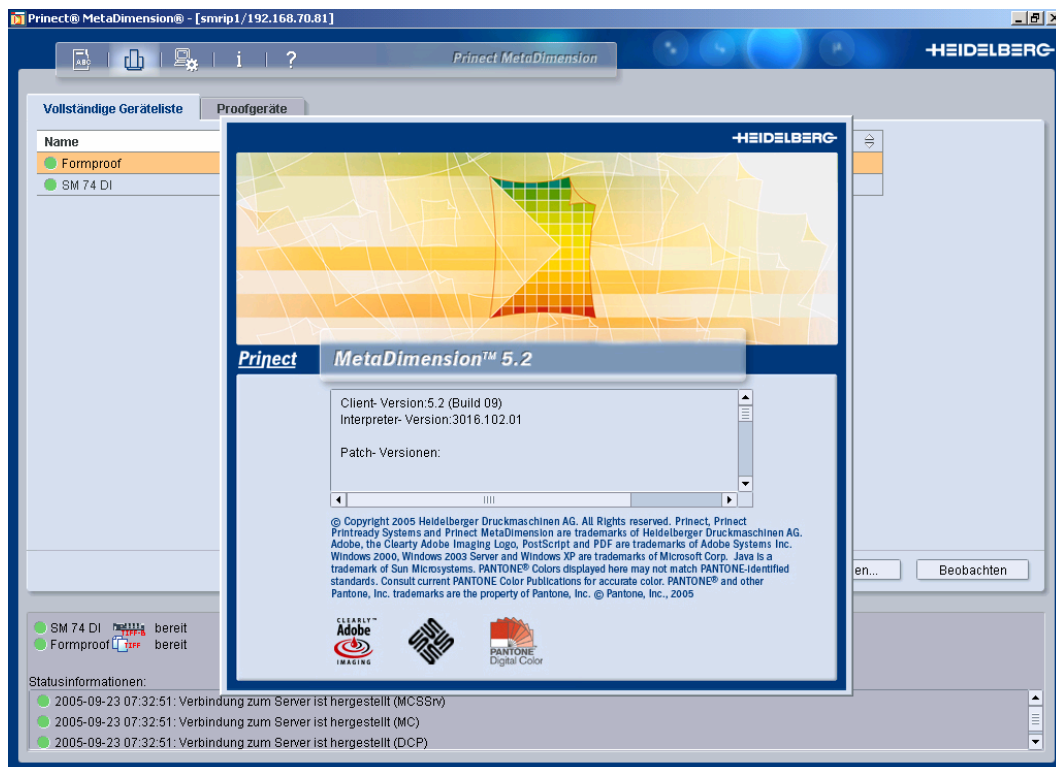
# **DI-Plot**

**Manual for setup a  
connection to  
Heidelberg  
Metadimension 4.x / 5.x**

Based on DI-Plot version 5.1

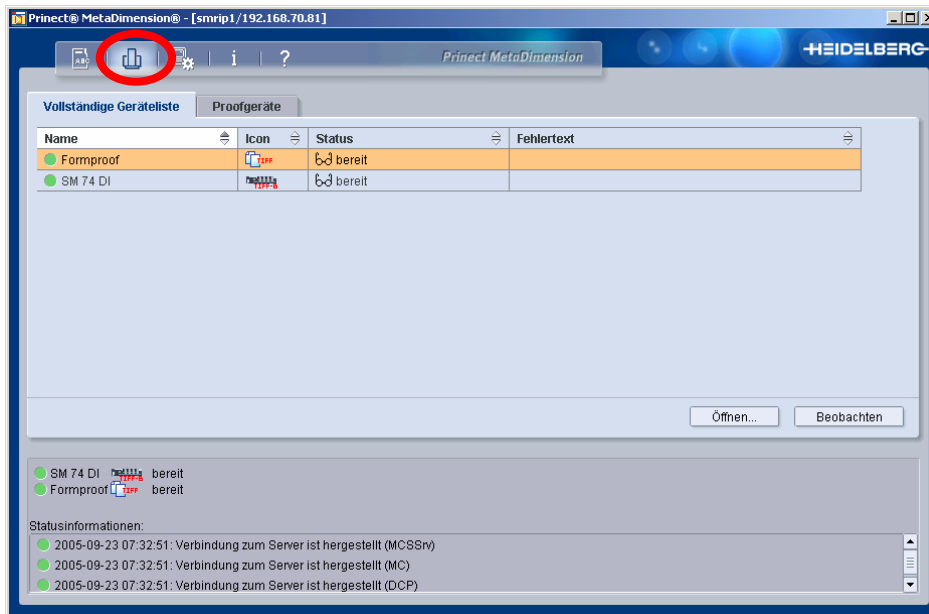
Digital Information Ltd.  
Technoparkstrasse 1, Ch-8005 Zürich, Switzerland  
Phone ++41 (0)43 818 20 00, Fax ++41 (0) 818 20 09  
[www.digiinfo.com](http://www.digiinfo.com), [info@digiinfo.com](mailto:info@digiinfo.com)

# Digital Information Ltd.

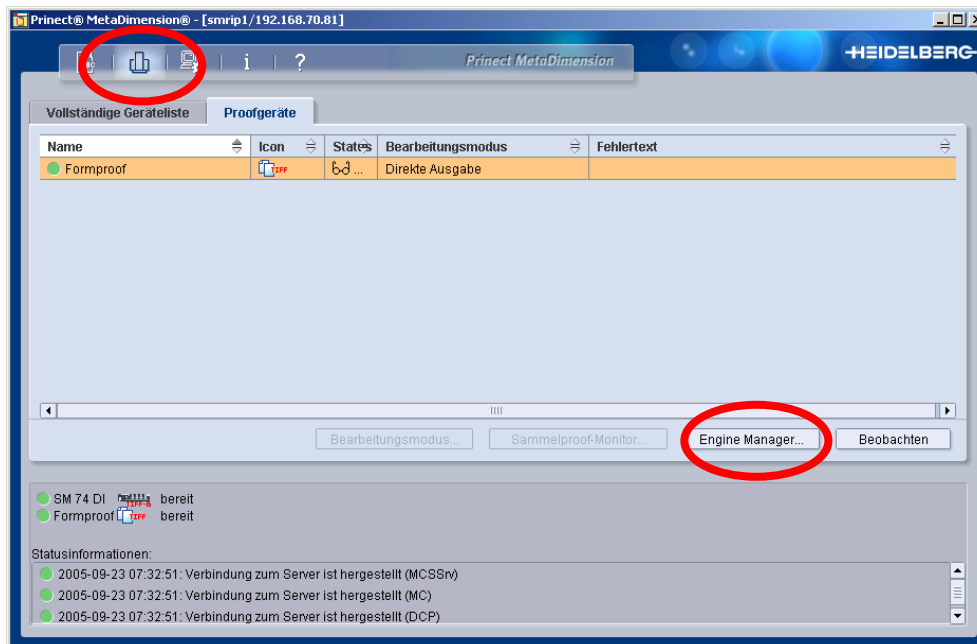


## STEP 1: Create a new Output Device

Go to devices:

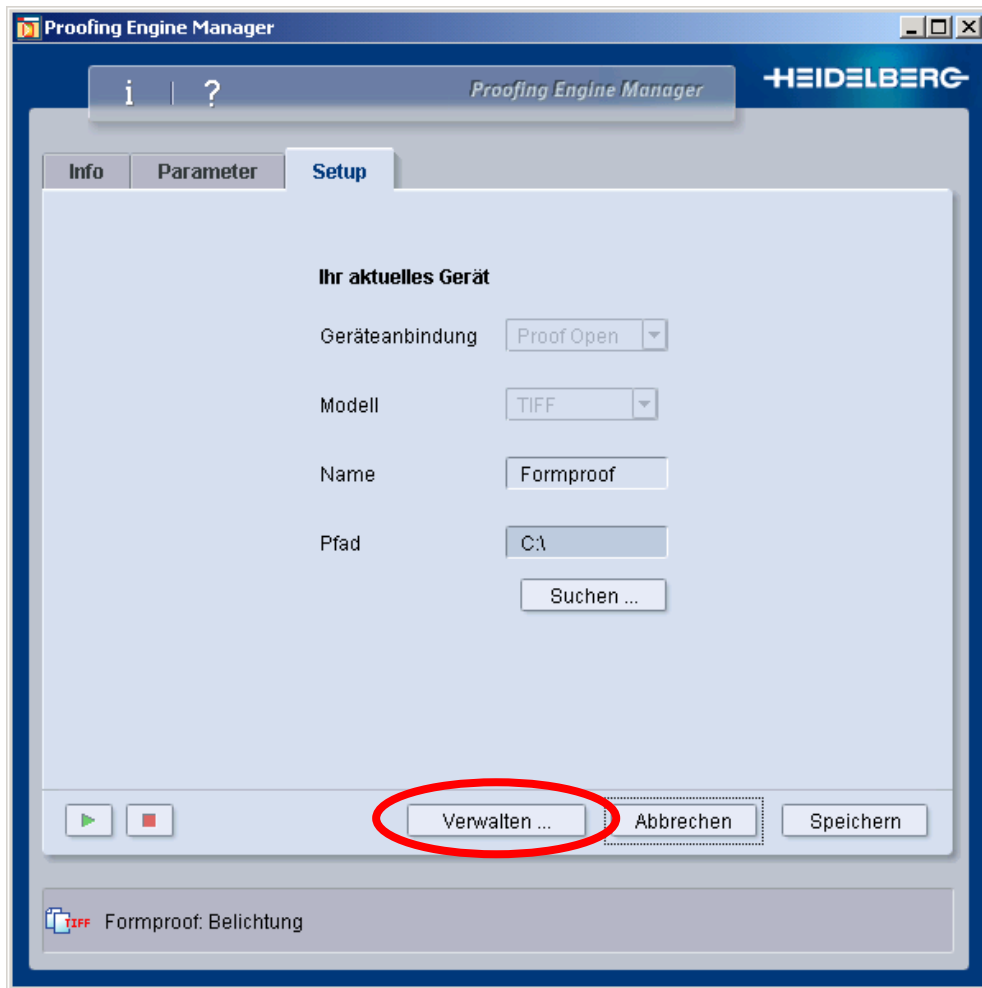


Go to proof devices and select the engine manager



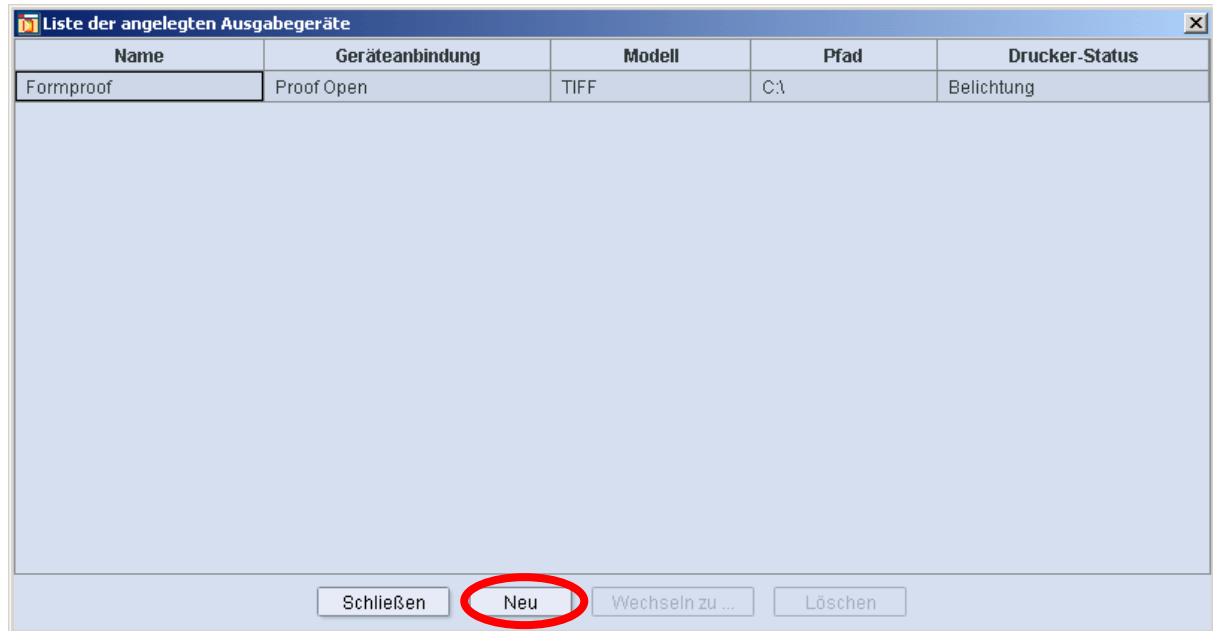
# Digital Information Ltd.

Select “Administration”

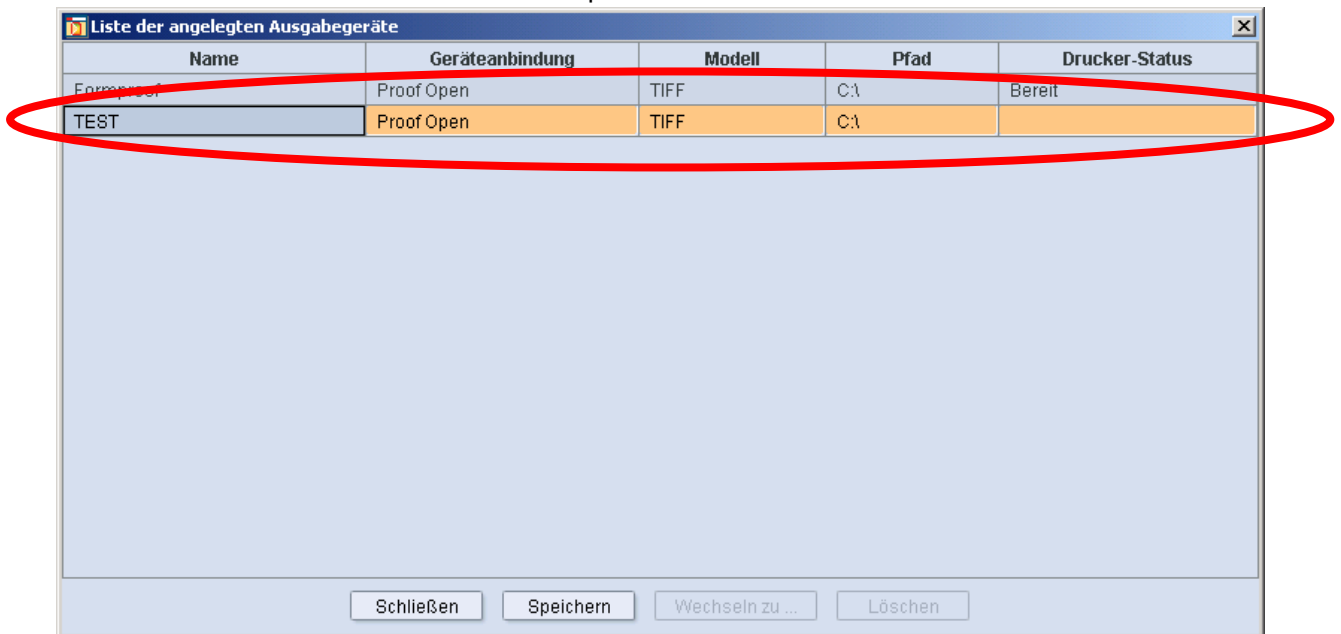


Create the new device by selecting the button NEW

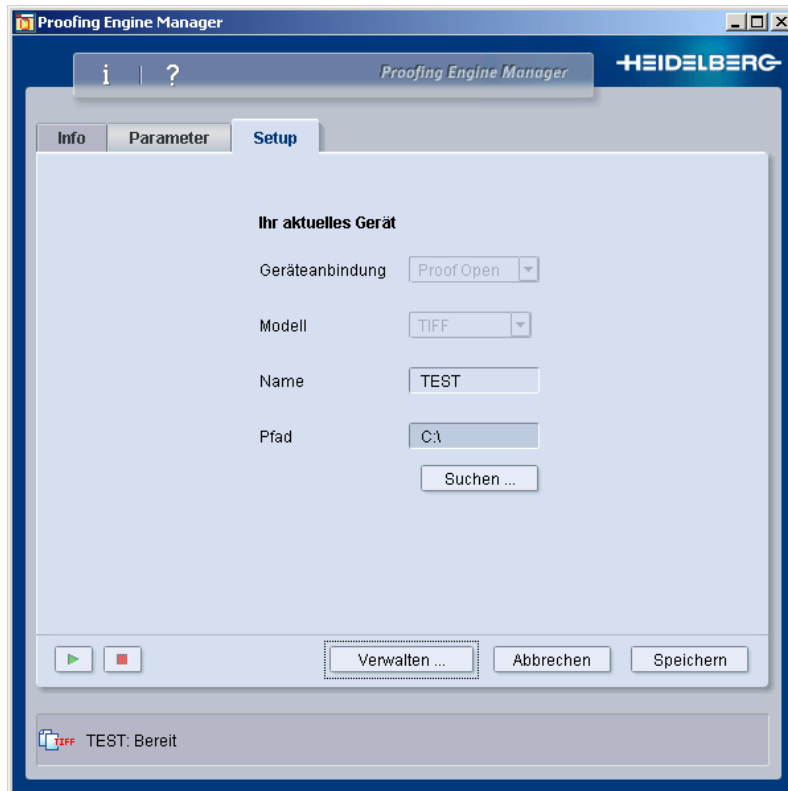
# Digital Information Ltd.



Here the new device called TEST will show up:

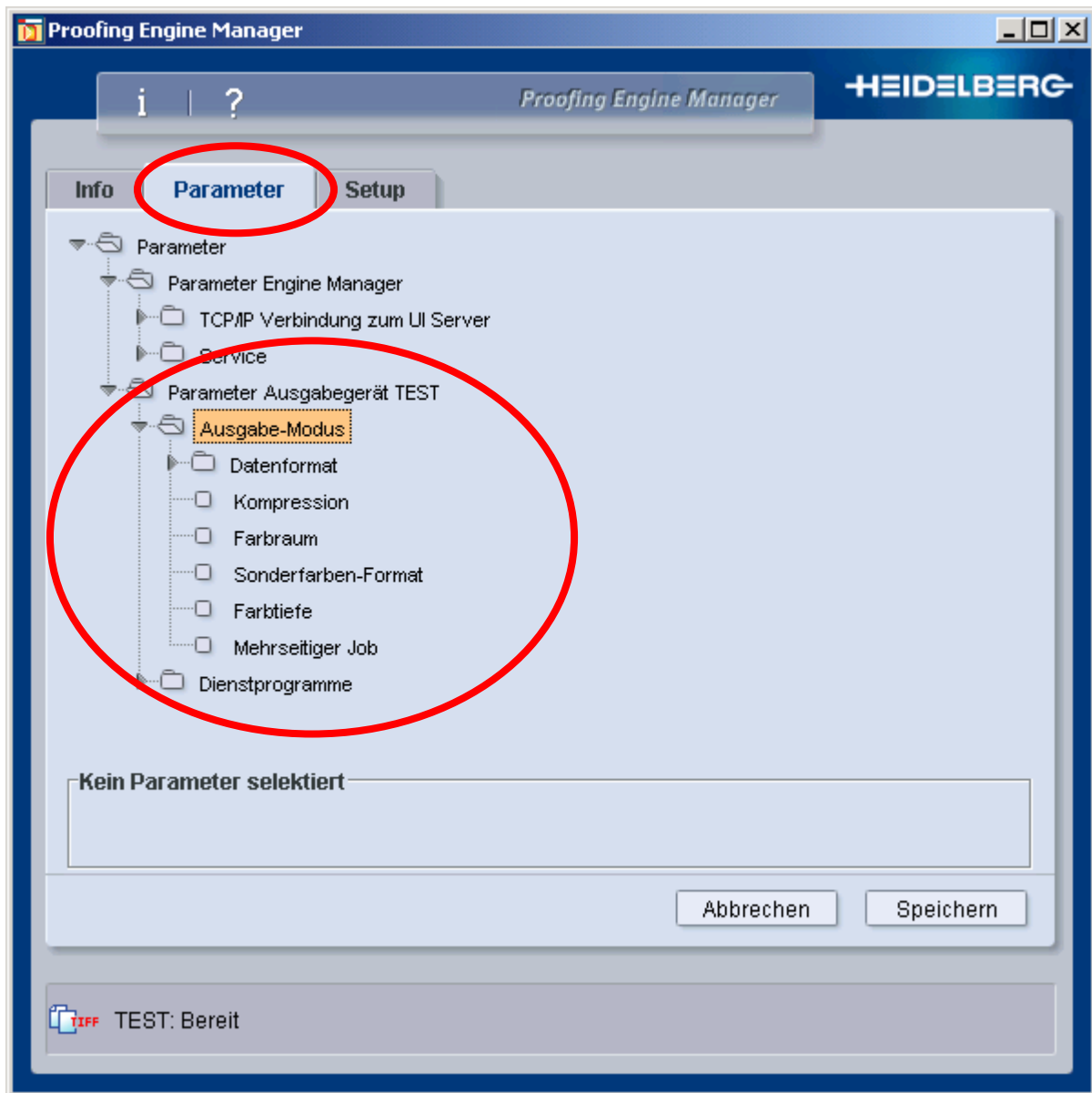


# Digital Information Ltd.



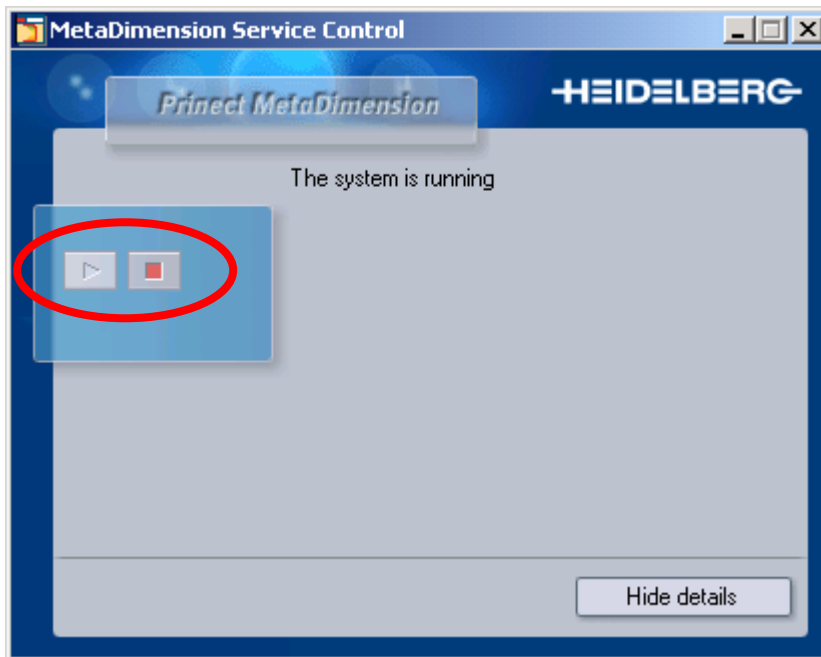
# Digital Information Ltd.

In the tab “Parameter”, define the TIFF parameters:



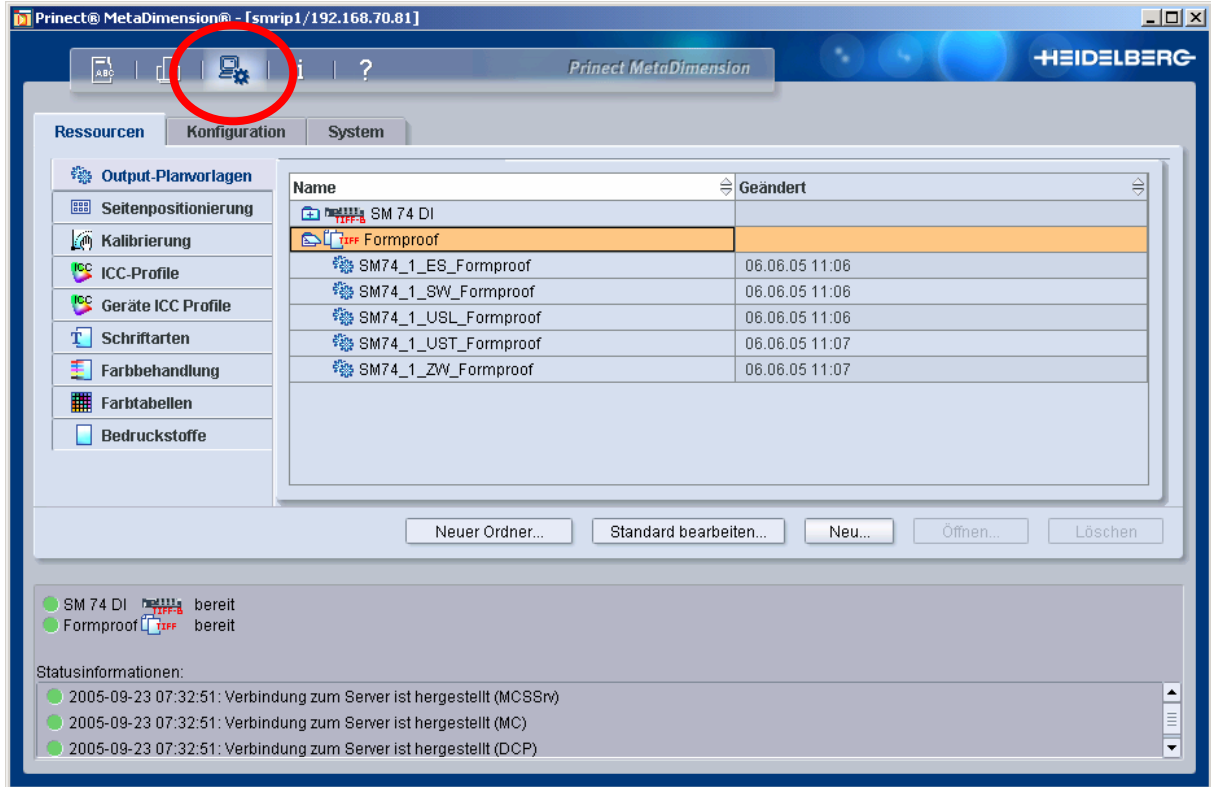
# Digital Information Ltd.

Restart the Metadimension Service:

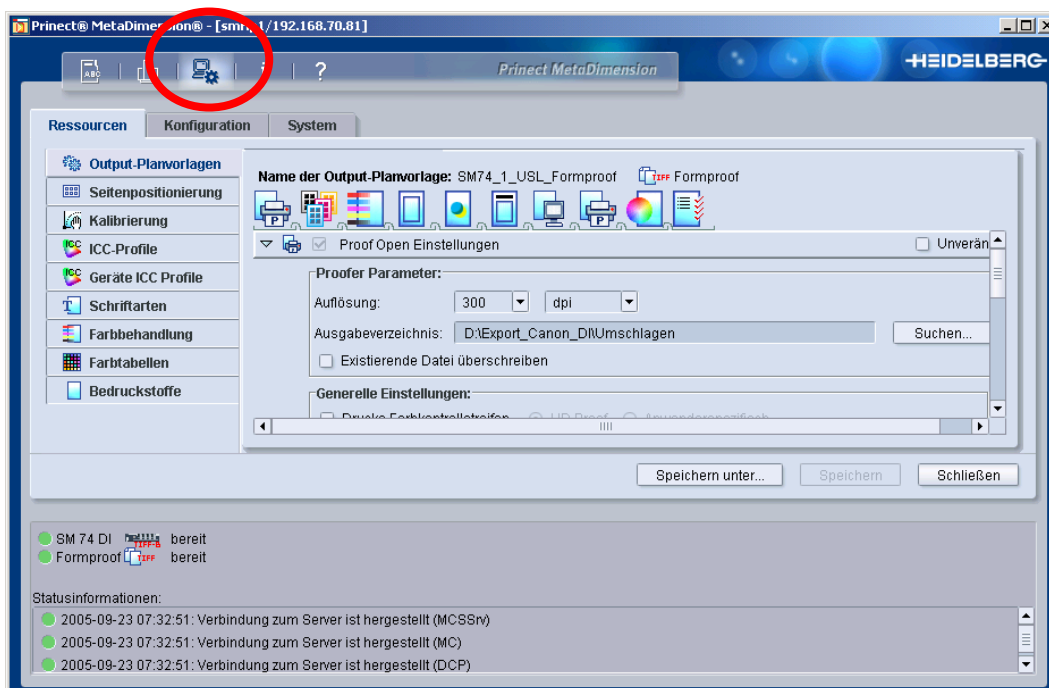




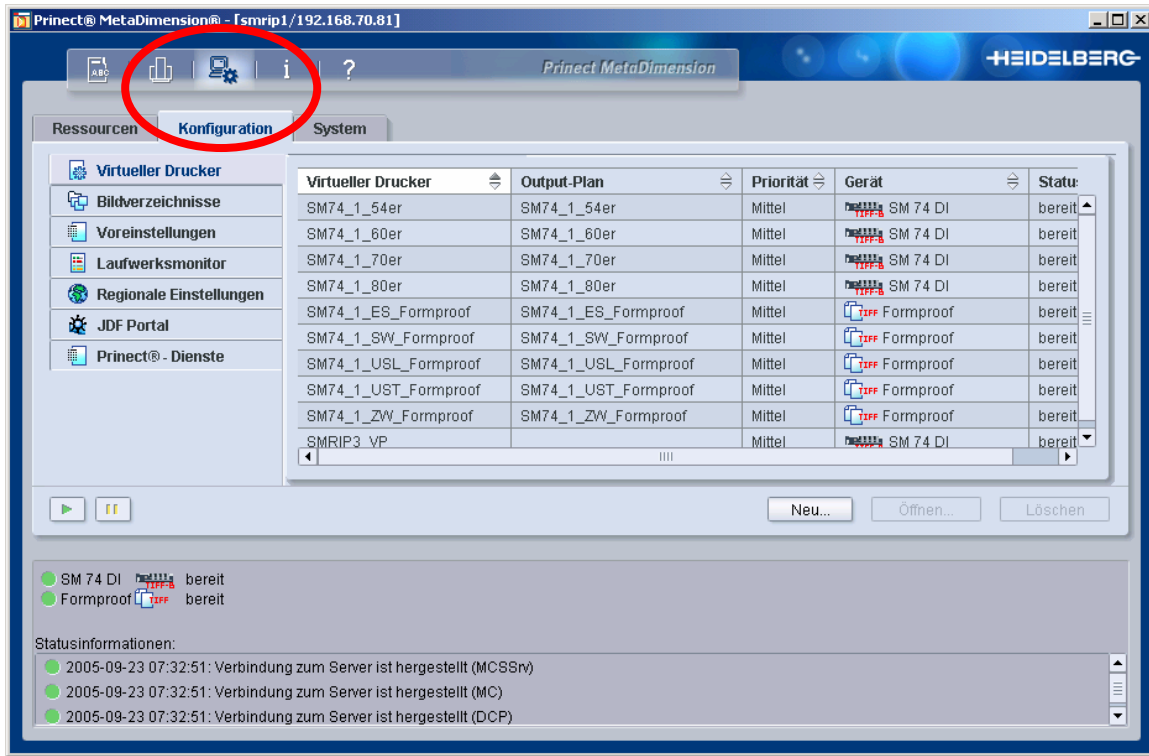
## Step 2: Create an Output Plan for the new device



Set Resolution and the Output directory by selecting



## STEP 3: Create a virtual printer for the new output plan



Select the device and the the ouput plan:

