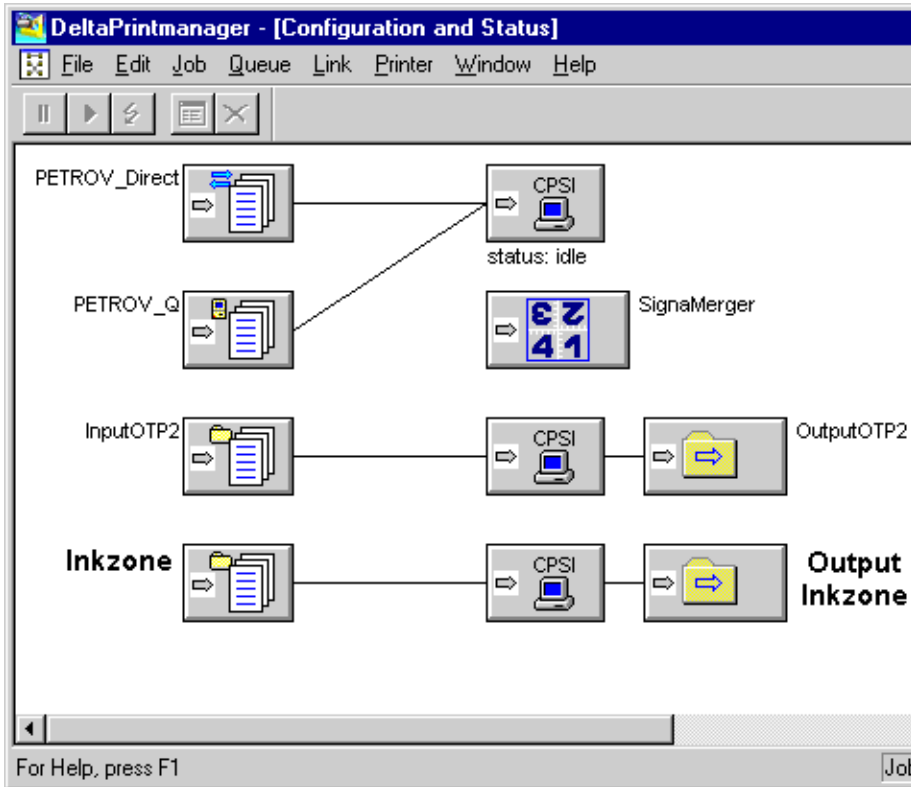
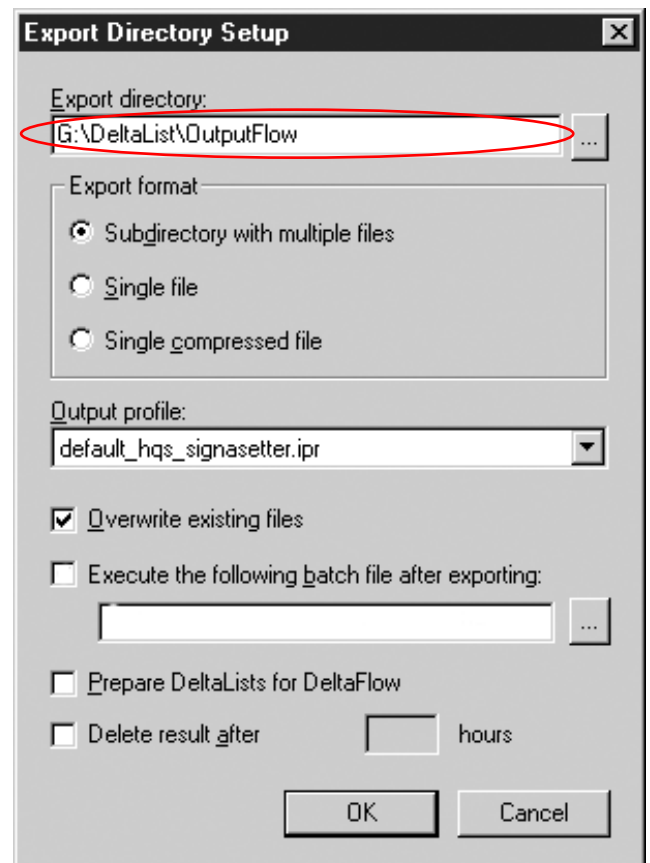
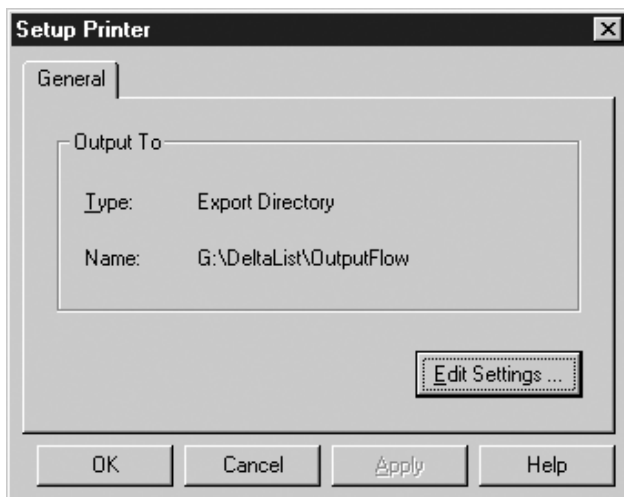


Delta Workflow Connection to DI-Plot / Inkzone



In the simplest setup the Delta Print Manager is run and an Export Directory is made from the Create Printer option. In the setup window a directory is selected for the Exporting of the full color Delta jobs.



The Export Format is set to a sub-directory with multiple files.

The directory (e.g. g:\deltatlist\outputflow) will serve as the input directory for the DI-Plot software, which will create the ink key information for the press.

PLOT Parameters Hotfolder

INPUT

Format: Heidelberg Delta Directory

Path: G:\DELTALIST\OUTPUTFLOW\

Flip: Negative Softening

Scaling X: 100.0000 Y: 100.0000 %

Source Directory as Output Name

Source File Treatment Scan Source Sub-Directories

OUTPUT INK ZONES

Format: Ink Zones

Resolution X: 50 Y: 50 dpi Colors: All

Calculation of **scaled** images' InkZones is controlled by sets of SizeClass-dependently chosen (of 3) InkZone-Parameters

SM102.IZL

SizeClass: Large at least 800.0 mm of Width

Make InkZone File

Random Name 8+3 Make Thumbnail

Short Spot Color Names RGB-Values

Front/Back Enabled

Unknown Spot Color Handling: Use Default Color

OK