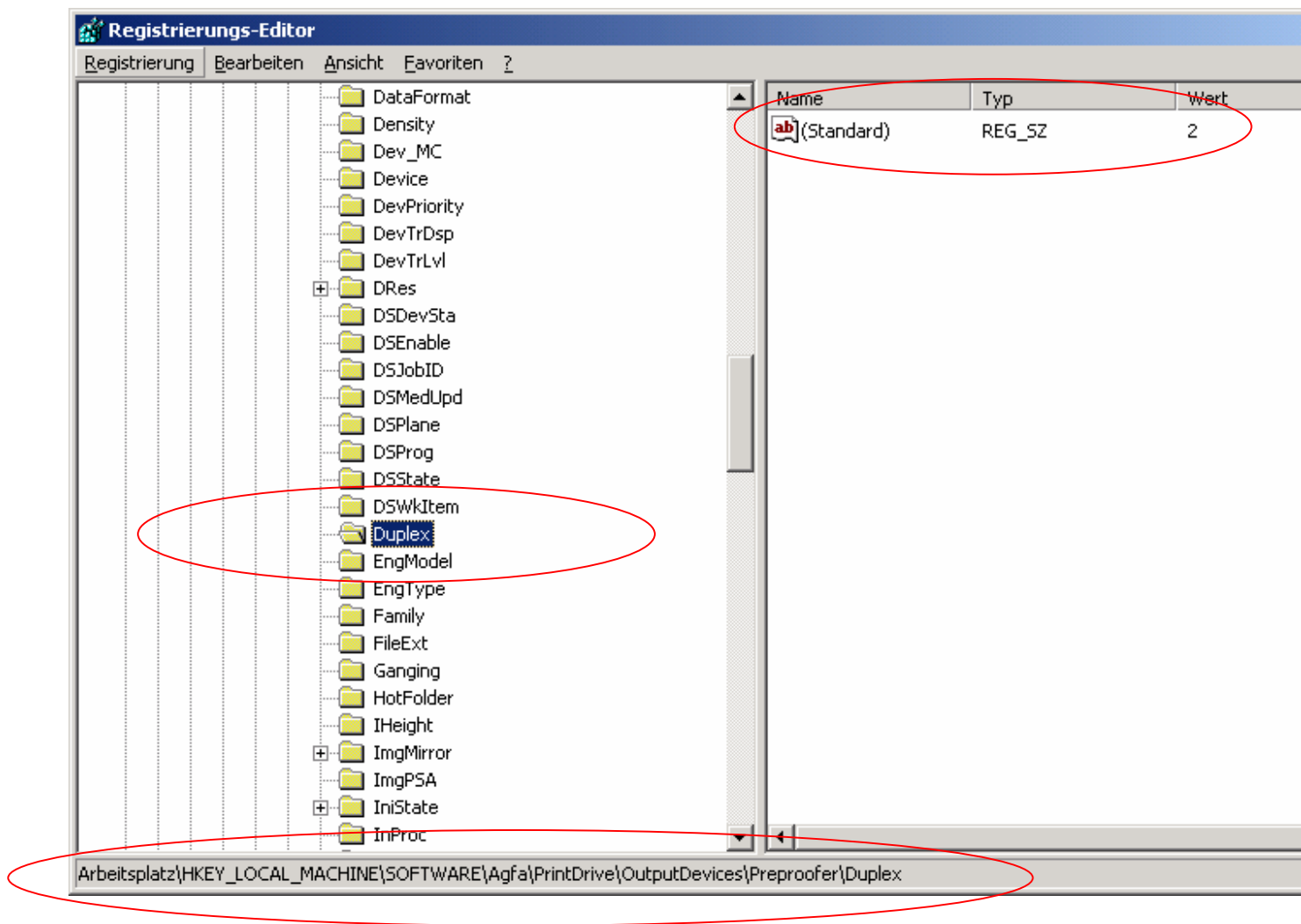
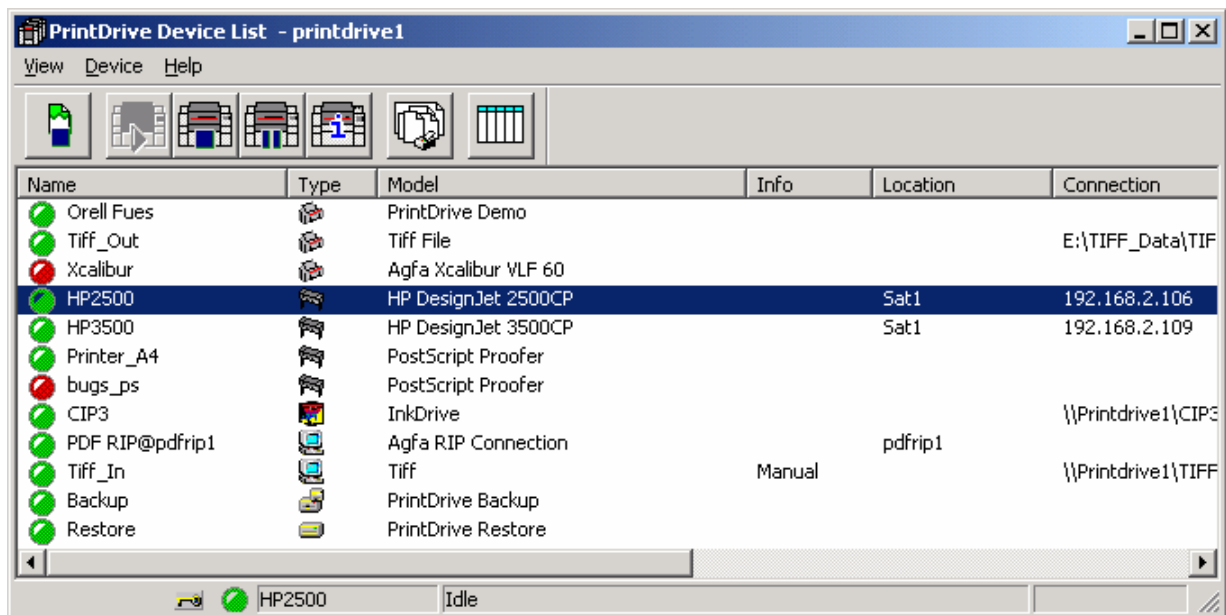


# Agfa Printdrive 3.0, Connection to Preproofer system with PS-Proofer / Composite

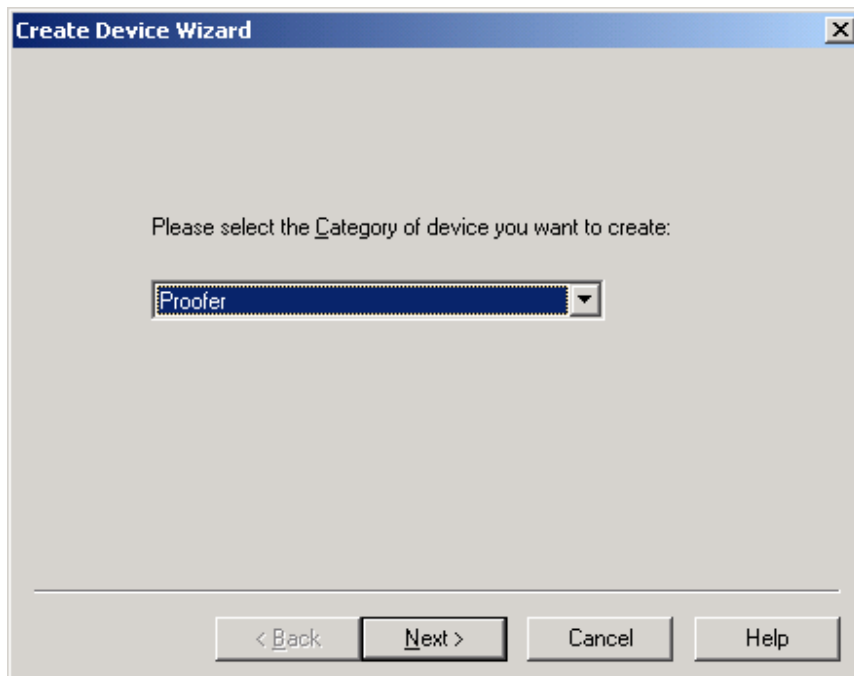
Registry settings for Duplex mode!  
Start through the cmd the regedit.exe program



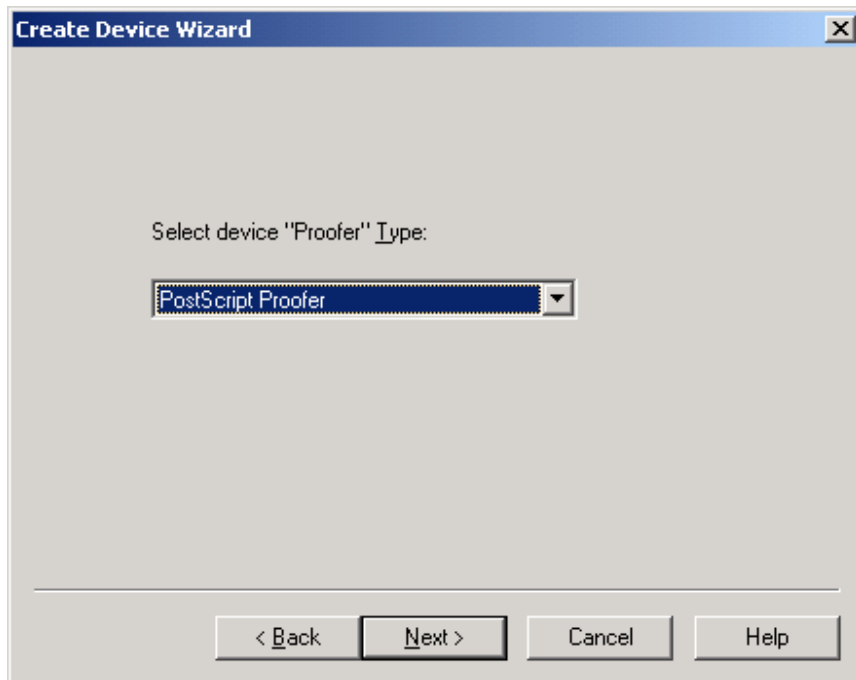
1. Select the menu "Device" → "Create new"



2. Choose „Proofer“



3. Choose „Postscript Proofer“



4. Choose a name for the new device



5. Set the parameters like

