

Digital Information Ltd.

Quick start manual

**Output to HP
1050**

**Connected through the
RTL-Generic Output**

Jan 2005

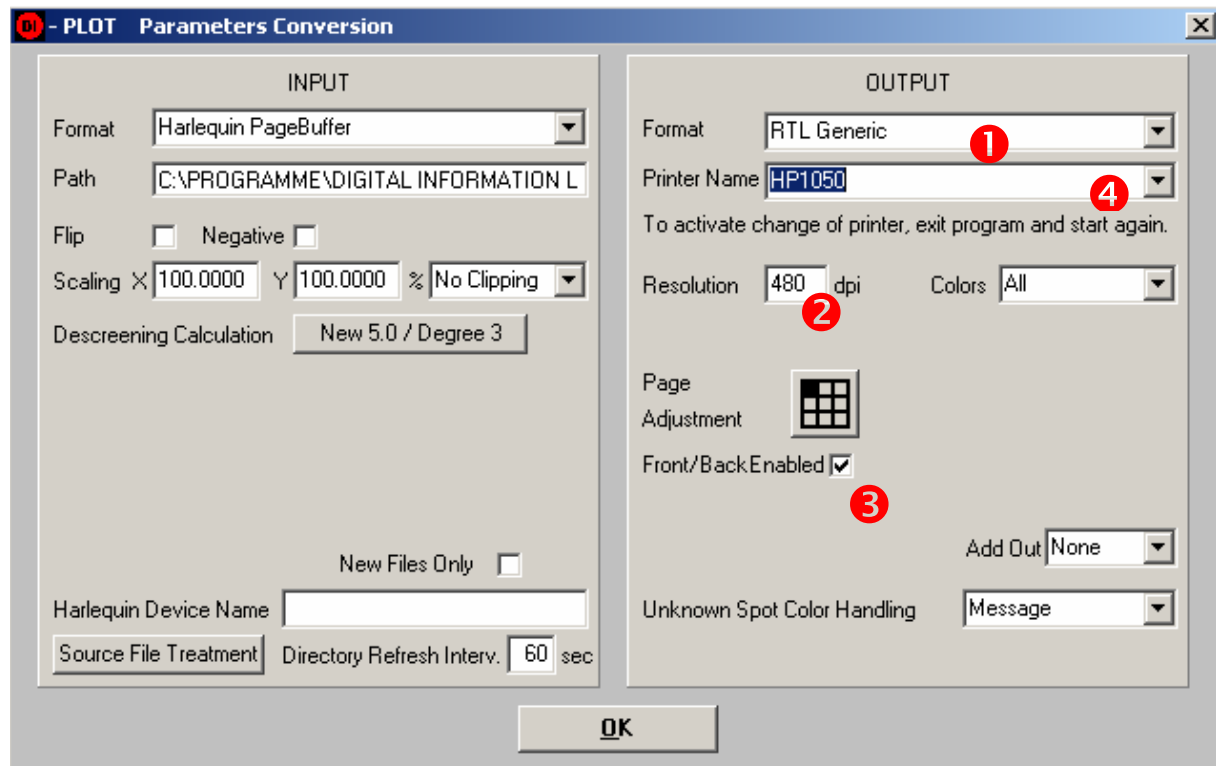
1. Set the output to “RTL Generic”

Set the parameter according to your workflow. You will need to select “RTL Generic” **1** as the output format. Select the windows printer which is connected to the windows printer **4**.

Note:

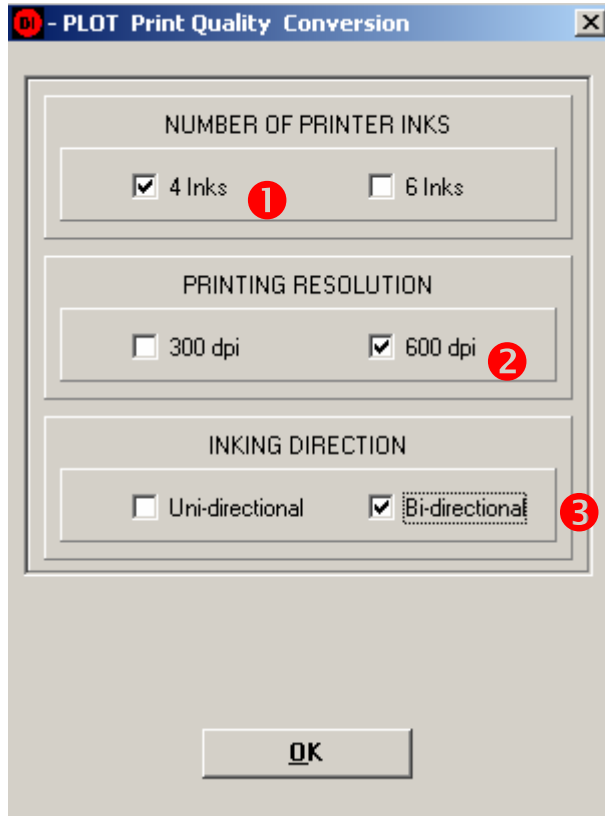
The value resolution **2** is the down sample quality, not the print quality

If you need to rotate your input data, select Front/Back enabled **3** . You will need to go through the RTL Generic Setup Conversion Menu to define the rotation value.



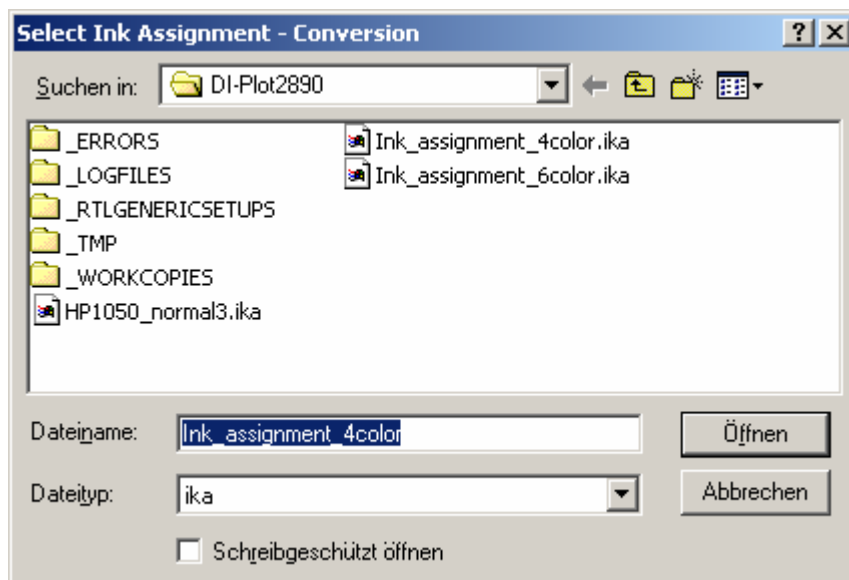
2. Set the print quality

Set the printer settings in the menu RTL Generic → Print Quality Conversion. Set the number of inks ① to 4. For imposition printouts the resolution can be set to 600 ② / Bi-directional ③ .



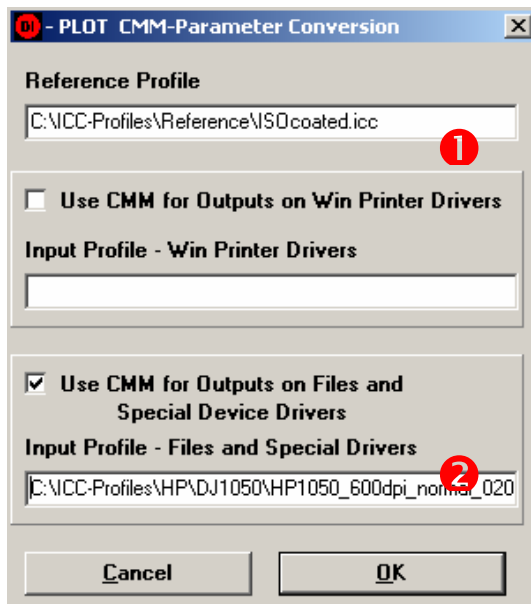
3. Select the Printer Linearization file

In the menu RTL Generic → Ink assignment - conversion, select the linearization.



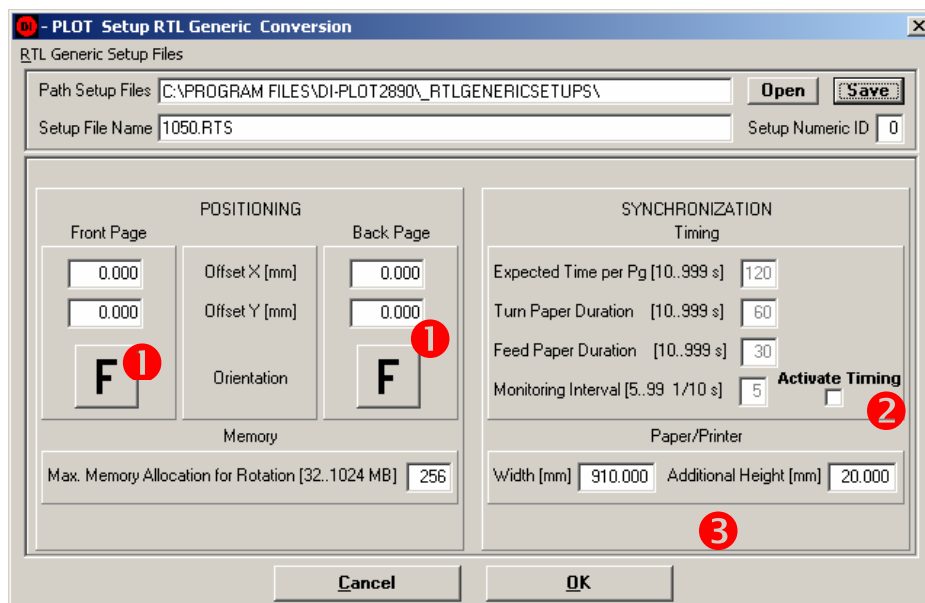
4. Set the Color Management

In the menu Management → CMM Conversion, select the ICC profiles. Choose a Reference Profile ❶ and a printer profile ❷ which matches your printer linearization file.

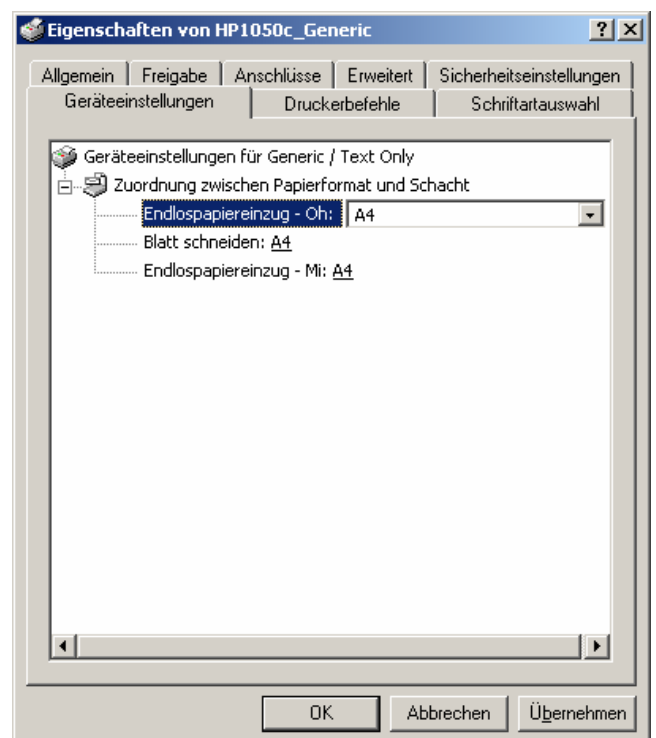
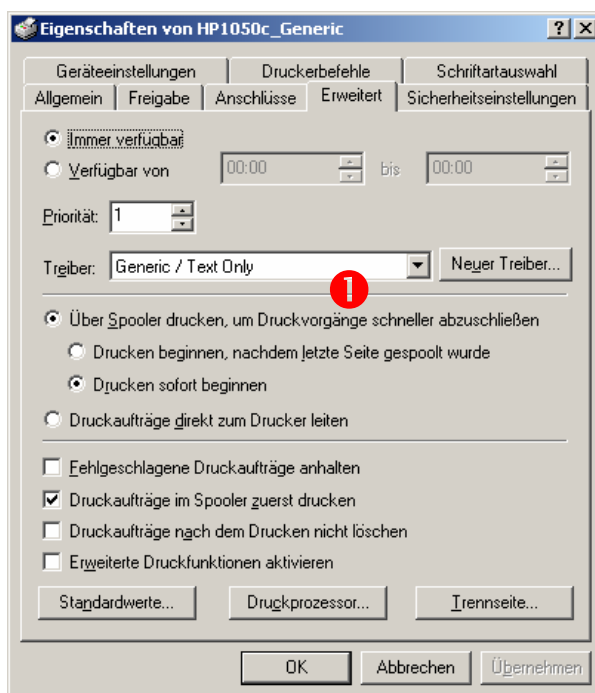
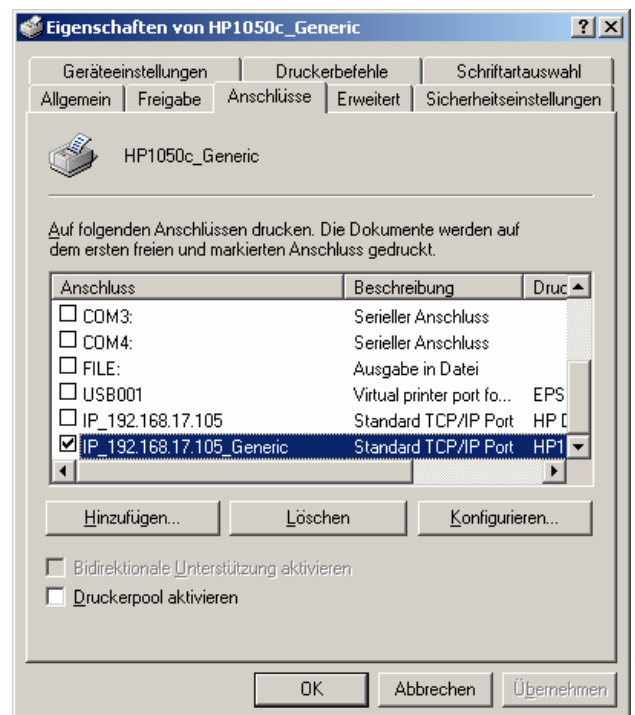
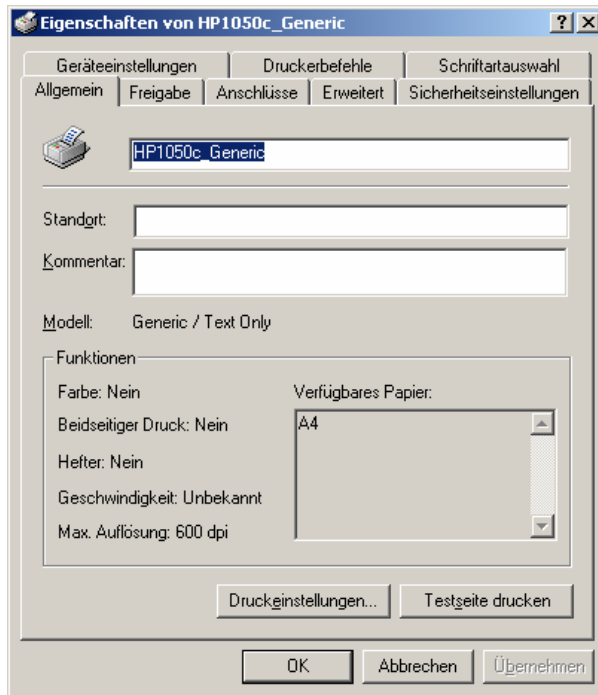



5. Set the page setup

In the menu RTL Generic → Setup Conversion, the page parameters have to be defined. Set the orientation of the job on the printout ❶. Deactivate the checkbox "Activate timing" ❷. Set the paper width of the roll media which is used ❸. If needed, adjust the value additional paper length ❸ (normally 20 mm is a good working value).



6. Setup the windows printer driver



Important: Set the driver to "Generic / Text only"  .